

PLAT RECORDING SHEET

PLAT NAME: Fort Bend County MUD No. 25 North District Site

PLAT NO: _____

ACREAGE: 26.848

LEAGUE: J. H. Cartwright League

ABSTRACT NUMBER: 16

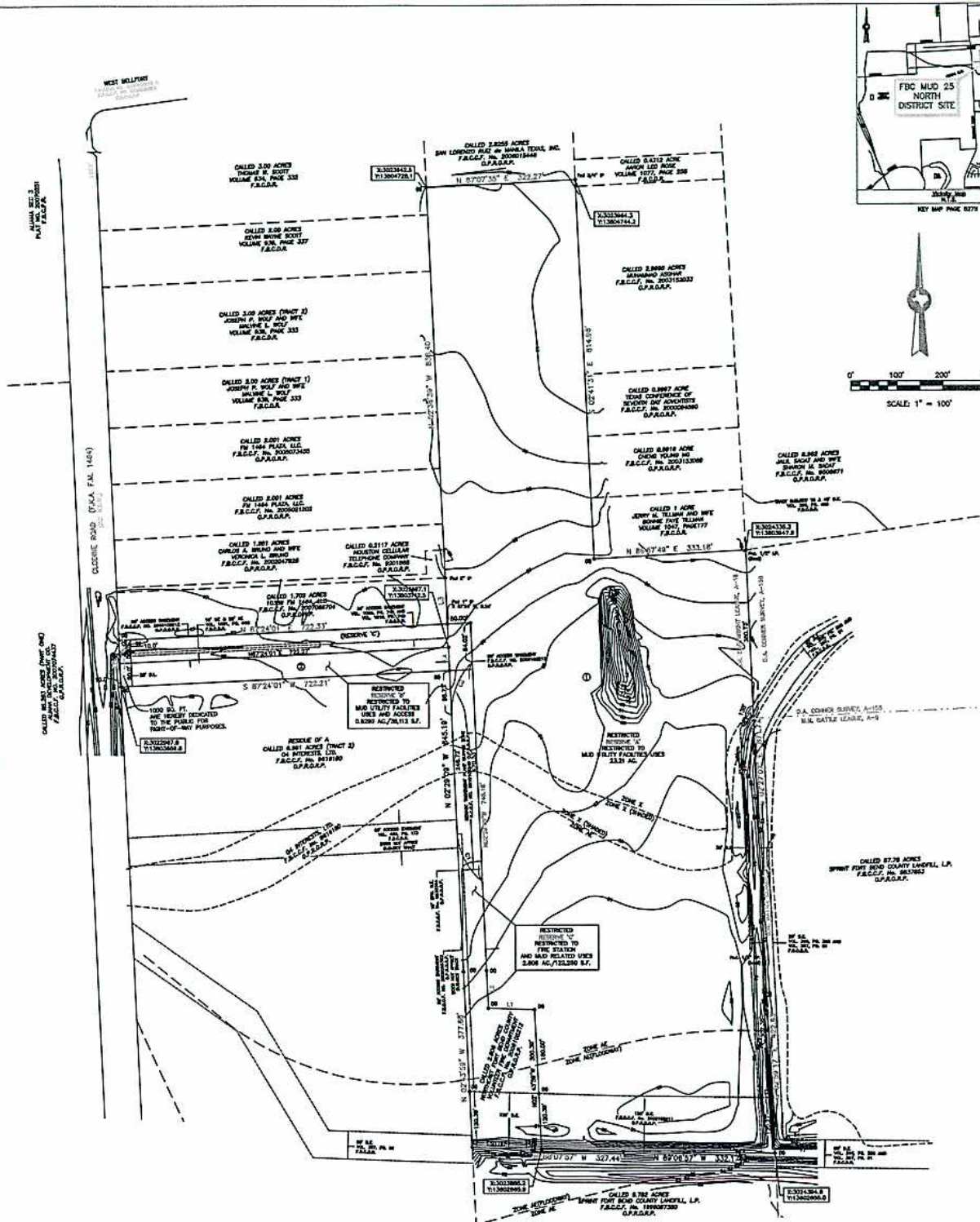
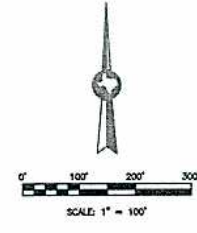
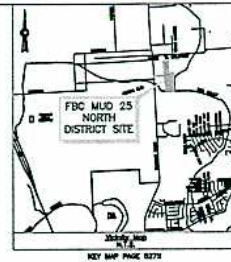
NUMBER OF BLOCKS: 1

NUMBER OF LOTS: 0

NUMBER OF RESERVES: 3

OWNERS: Fort Bend County MUD No. 25

(DEPUTY CLERK)



FORT BEND COUNTY MUD NO 25 NORTH DISTRICT SITE

BEING A SUBDIVISION OF 26.848 ACRES OUT OF
THE J.H. CARTWRIGHT LEAGUE, A-16, IN
FORT BEND COUNTY, TEXAS.

1 BLOCK 3 RESERVES

OWNER

FORT BEND COUNTY
MUNICIPAL UTILITY DISTRICT NO. 25
1820 OLD RICHMOND ROAD
(P.O. BOX 2847)
SUGARLAND, TEXAS 77468
(281) 277-0129 (PH)
(281) 277-0028 (FAX)

MARCH, 2012

LINE	LENGTH	BEARING
1A	100.00	S 89° 57' 37" W
1B	100.00	S 89° 57' 37" W
1C	100.00	S 89° 57' 37" W
1D	100.00	S 89° 57' 37" W

Benchmark: Fort Bend County 2005 LDMR Benchmark No. 21, being a PC nail in the apex of marker located at the northeast corner of the intersection of Shaw-Quinn Road and Old Richmond Road. Elevation = 93.24 feet, 1940-1948, (2001 A&J)

PROJECT TBM: Top of NW spike in a corner pile in the east right-of-way of FM 1466 approximately 17 feet north of the southeast corner of Restricted Reserve "B". Elevation = 97.36 feet, same time (2001 A&J)

DATE	BOOK	PAGE	BY	REVISION	DATE
01	120-00	247	JHR	1	11-21-07
02	120-00	247	JHR	2	11-21-07

Edminster Hinshelwood Russ
civil engineers - surveyors - land planners
1055 westfield drive Houston Texas 7702
713.784-4100 713.784-4577 www.edr.com