

**r.g. miller  
engineers, inc.**

*Since 1966*

June 20, 2012

Mr. Andy Meyers  
Commissioner, Precinct 3  
22333 Grand Corner Drive  
Katy, Texas 77494  
281-238-1401



RE: Grand Lakes Marketplace

Dear Mr. Meyers:

Enclosed is a copy of the final plat. We are requesting to set public hearing for the above reference plat.

If you have any questions or require additional information, please give me a call.

Sincerely,

**R.G. Miller Engineers, Inc.**

  
Yolanda Norman  
Site Coordinator

cc: Fort Bend County Engineering

P 3395.02 F

S:\3395.02\_Grand Lakes\Admin\Corres\L-3 Commissioner, Precinct 1.doc

**Texas Firm Registration No. F-487**

**12121 wickchester lane • suite 200 • houston, texas 77079 • 713.461.9600 • fax 713.461.8455**

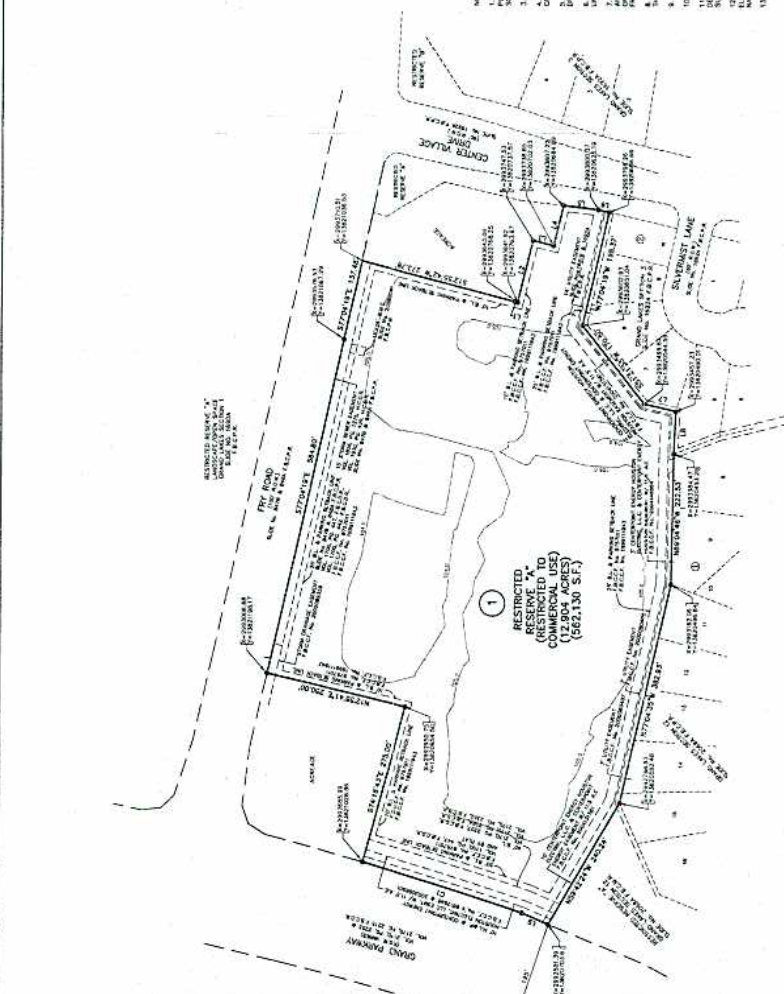


**LEGEND**

FEEDER = FORT BEND COUNTY REEDED RECORDATION  
 FEEC = FORT BEND COUNTY REEDED RECORDATION  
 V = VENDOR  
 R = RECORDATION  
 S = SURVEY  
 A = ADJACENT  
 B = BOUNDARY LINE  
 A.L. = ADJACENT LAND  
 W.L. = WATER WITH FARMERS  
 P.W. = PUBLIC WORKS  
 P.M. = PUBLIC MARKET  
 P.C. = PUBLIC CENTER  
 P.S. = PUBLIC SERVICE

KEY MAP: 520948C

- NOTES:**
- ALL DIMENSIONS AND COORDINATES SHOWN HEREON ARE BASED UPON THE 2011 NATIONAL DATUM. ALL DIMENSIONS SHOWN ON THIS PLAN SHALL BE CONSIDERED TO BE THE FINAL DIMENSIONS FOR THE PROJECT.
  - THIS PLAN IS SUBJECT TO THE REQUIREMENTS OF FORT BEND COUNTY ORDINANCES AND ALL APPLICABLE STATE AND FEDERAL LAWS.
  - THE DRAINAGE SYSTEM FOR THIS SUBDIVISION IS DESCRIBED IN ATTACHED DRAWING NO. 1, DRAINAGE SYSTEM, WHICH SHOWS THE DRAINAGE SYSTEM WITH IN-TERRAIN DRAINAGE CANALS AND DRAINAGE STRUCTURES.
  - THE DRAINAGE SYSTEM FOR THIS SUBDIVISION IS DESCRIBED IN ATTACHED DRAWING NO. 2, DRAINAGE SYSTEM, WHICH SHOWS THE DRAINAGE SYSTEM WITH IN-TERRAIN DRAINAGE CANALS AND DRAINAGE STRUCTURES.
  - THE DRAINAGE SYSTEM FOR THIS SUBDIVISION IS DESCRIBED IN ATTACHED DRAWING NO. 3, DRAINAGE SYSTEM, WHICH SHOWS THE DRAINAGE SYSTEM WITH IN-TERRAIN DRAINAGE CANALS AND DRAINAGE STRUCTURES.
  - THE DRAINAGE SYSTEM FOR THIS SUBDIVISION IS DESCRIBED IN ATTACHED DRAWING NO. 4, DRAINAGE SYSTEM, WHICH SHOWS THE DRAINAGE SYSTEM WITH IN-TERRAIN DRAINAGE CANALS AND DRAINAGE STRUCTURES.
  - THE DRAINAGE SYSTEM FOR THIS SUBDIVISION IS DESCRIBED IN ATTACHED DRAWING NO. 5, DRAINAGE SYSTEM, WHICH SHOWS THE DRAINAGE SYSTEM WITH IN-TERRAIN DRAINAGE CANALS AND DRAINAGE STRUCTURES.
  - THE DRAINAGE SYSTEM FOR THIS SUBDIVISION IS DESCRIBED IN ATTACHED DRAWING NO. 6, DRAINAGE SYSTEM, WHICH SHOWS THE DRAINAGE SYSTEM WITH IN-TERRAIN DRAINAGE CANALS AND DRAINAGE STRUCTURES.
  - THE DRAINAGE SYSTEM FOR THIS SUBDIVISION IS DESCRIBED IN ATTACHED DRAWING NO. 7, DRAINAGE SYSTEM, WHICH SHOWS THE DRAINAGE SYSTEM WITH IN-TERRAIN DRAINAGE CANALS AND DRAINAGE STRUCTURES.
  - THE DRAINAGE SYSTEM FOR THIS SUBDIVISION IS DESCRIBED IN ATTACHED DRAWING NO. 8, DRAINAGE SYSTEM, WHICH SHOWS THE DRAINAGE SYSTEM WITH IN-TERRAIN DRAINAGE CANALS AND DRAINAGE STRUCTURES.
  - THE DRAINAGE SYSTEM FOR THIS SUBDIVISION IS DESCRIBED IN ATTACHED DRAWING NO. 9, DRAINAGE SYSTEM, WHICH SHOWS THE DRAINAGE SYSTEM WITH IN-TERRAIN DRAINAGE CANALS AND DRAINAGE STRUCTURES.
  - THE DRAINAGE SYSTEM FOR THIS SUBDIVISION IS DESCRIBED IN ATTACHED DRAWING NO. 10, DRAINAGE SYSTEM, WHICH SHOWS THE DRAINAGE SYSTEM WITH IN-TERRAIN DRAINAGE CANALS AND DRAINAGE STRUCTURES.
  - THE DRAINAGE SYSTEM FOR THIS SUBDIVISION IS DESCRIBED IN ATTACHED DRAWING NO. 11, DRAINAGE SYSTEM, WHICH SHOWS THE DRAINAGE SYSTEM WITH IN-TERRAIN DRAINAGE CANALS AND DRAINAGE STRUCTURES.
  - THE DRAINAGE SYSTEM FOR THIS SUBDIVISION IS DESCRIBED IN ATTACHED DRAWING NO. 12, DRAINAGE SYSTEM, WHICH SHOWS THE DRAINAGE SYSTEM WITH IN-TERRAIN DRAINAGE CANALS AND DRAINAGE STRUCTURES.
  - THE DRAINAGE SYSTEM FOR THIS SUBDIVISION IS DESCRIBED IN ATTACHED DRAWING NO. 13, DRAINAGE SYSTEM, WHICH SHOWS THE DRAINAGE SYSTEM WITH IN-TERRAIN DRAINAGE CANALS AND DRAINAGE STRUCTURES.



# GRAND LAKES MARKETPLACE

A SUBDIVISION OF 12,804 ACRES OF LAND LOCATED IN THE COUNTY OF FORT BEND, TEXAS, BEING ALL OF RESTRICTED RESERVE "A" OF STERLING DEVELOPMENT FRY ROAD REPLAT NO. 1, A SUBDIVISION RECORDED IN PLAT NO. 200800411 OF THE F.B.C.P.R. AND BEING A PARTIAL REPLAT OF STERLING DEVELOPMENT FRY ROAD REPLAT NO. 1, A SUBDIVISION RECORDED IN PLAT NO. 200800411 OF FORT BEND COUNTY, TEXAS.

REASON FOR REPLAT: TO CREATE ONE COMMERCIAL RESERVE AS REQUIRED BY FORT BEND COUNTY ORDINANCE 10.00101, STERLING DEVELOPMENT FRY ROAD REPLAT NO. 1.

OWNER: CINCO GRAND & FRY RETAIL, LP, A TEXAS LIMITED PARTNERSHIP  
 C/O FIDELITY REALTY PARTNERS  
 19 BRUNNENHOF LANE, SUITE 100  
 HOUSTON, TEXAS 77057  
 (713) 623-6800

SCALE: 1"=100'  
 1 BLOCK  
 1 RESERVE  
 0 100 200 300  
 FEET SCALE  
 JUNE, 2012

**INDEXES**

**r.g.r. miller engineers**

18121 Wilshire Lane, Suite 200  
 Houston, Texas 77078  
 (713) 865-1111  
 JAC & MALLER P.C.  
 TEXAS FIRM REGISTRATION NO. F-489

**SURVEY & GROUP**

1700 WEST SAM HOUSTON PARKWAY NORTH HOUSTON, TEXAS 77057  
 (281) 416-1111  
 MCKENZIE SURVEYING & CONSULTING, INC.  
 TEXAS FIRM REGISTRATION NO. F-140

LINE NUMBER	LINE LENGTH	BEARING
1	100.00	S 89° 59' 59" W
2	100.00	S 89° 59' 59" W
3	100.00	S 89° 59' 59" W
4	100.00	S 89° 59' 59" W
5	100.00	S 89° 59' 59" W
6	100.00	S 89° 59' 59" W
7	100.00	S 89° 59' 59" W
8	100.00	S 89° 59' 59" W
9	100.00	S 89° 59' 59" W
10	100.00	S 89° 59' 59" W

LINE NUMBER	LINE LENGTH	BEARING
11	100.00	S 89° 59' 59" W
12	100.00	S 89° 59' 59" W
13	100.00	S 89° 59' 59" W
14	100.00	S 89° 59' 59" W
15	100.00	S 89° 59' 59" W
16	100.00	S 89° 59' 59" W
17	100.00	S 89° 59' 59" W
18	100.00	S 89° 59' 59" W
19	100.00	S 89° 59' 59" W
20	100.00	S 89° 59' 59" W

COURSE	LENGTH	BEARING	CHD BEARING	CHD DIST
1	100.00	S 89° 59' 59" W	S 89° 59' 59" W	100.00
2	100.00	S 89° 59' 59" W	S 89° 59' 59" W	100.00
3	100.00	S 89° 59' 59" W	S 89° 59' 59" W	100.00
4	100.00	S 89° 59' 59" W	S 89° 59' 59" W	100.00
5	100.00	S 89° 59' 59" W	S 89° 59' 59" W	100.00
6	100.00	S 89° 59' 59" W	S 89° 59' 59" W	100.00
7	100.00	S 89° 59' 59" W	S 89° 59' 59" W	100.00
8	100.00	S 89° 59' 59" W	S 89° 59' 59" W	100.00
9	100.00	S 89° 59' 59" W	S 89° 59' 59" W	100.00
10	100.00	S 89° 59' 59" W	S 89° 59' 59" W	100.00

I, **BARBARA L. GAYTON**, Surveyor, do hereby certify that the plat of this subdivision shown hereon was prepared by me or under my direct supervision and that I am a duly licensed Surveyor in the State of Texas. I am a duly licensed Surveyor in the State of Texas. I am a duly licensed Surveyor in the State of Texas.

APPROVED BY THE COMMISSIONERS COURT OF FORT BEND COUNTY, TEXAS, THIS \_\_\_\_\_ DAY OF \_\_\_\_\_, 2012.

COMMISSIONER, DISTRICT 1  
 COMMISSIONER, DISTRICT 2  
 COMMISSIONER, DISTRICT 3  
 COMMISSIONER, DISTRICT 4

I, **BARBARA L. GAYTON**, Surveyor, do hereby certify that the plat of this subdivision shown hereon was prepared by me or under my direct supervision and that I am a duly licensed Surveyor in the State of Texas. I am a duly licensed Surveyor in the State of Texas. I am a duly licensed Surveyor in the State of Texas.

STATE OF TEXAS  
 COUNTY OF FORT BEND  
 I, **BARBARA L. GAYTON**, Surveyor, do hereby certify that the plat of this subdivision shown hereon was prepared by me or under my direct supervision and that I am a duly licensed Surveyor in the State of Texas. I am a duly licensed Surveyor in the State of Texas. I am a duly licensed Surveyor in the State of Texas.

OWNER: CINCO GRAND & FRY RETAIL, LP, A TEXAS LIMITED PARTNERSHIP  
 C/O FIDELITY REALTY PARTNERS  
 19 BRUNNENHOF LANE, SUITE 100  
 HOUSTON, TEXAS 77057  
 (713) 623-6800

APPROVED BY THE COMMISSIONERS COURT OF FORT BEND COUNTY, TEXAS, THIS \_\_\_\_\_ DAY OF \_\_\_\_\_, 2012.

COMMISSIONER, DISTRICT 1  
 COMMISSIONER, DISTRICT 2  
 COMMISSIONER, DISTRICT 3  
 COMMISSIONER, DISTRICT 4

I, **BARBARA L. GAYTON**, Surveyor, do hereby certify that the plat of this subdivision shown hereon was prepared by me or under my direct supervision and that I am a duly licensed Surveyor in the State of Texas. I am a duly licensed Surveyor in the State of Texas. I am a duly licensed Surveyor in the State of Texas.

I, **BARBARA L. GAYTON**, Surveyor, do hereby certify that the plat of this subdivision shown hereon was prepared by me or under my direct supervision and that I am a duly licensed Surveyor in the State of Texas. I am a duly licensed Surveyor in the State of Texas. I am a duly licensed Surveyor in the State of Texas.

I, **BARBARA L. GAYTON**, Surveyor, do hereby certify that the plat of this subdivision shown hereon was prepared by me or under my direct supervision and that I am a duly licensed Surveyor in the State of Texas. I am a duly licensed Surveyor in the State of Texas. I am a duly licensed Surveyor in the State of Texas.

I, **BARBARA L. GAYTON**, Surveyor, do hereby certify that the plat of this subdivision shown hereon was prepared by me or under my direct supervision and that I am a duly licensed Surveyor in the State of Texas. I am a duly licensed Surveyor in the State of Texas. I am a duly licensed Surveyor in the State of Texas.

I, **BARBARA L. GAYTON**, Surveyor, do hereby certify that the plat of this subdivision shown hereon was prepared by me or under my direct supervision and that I am a duly licensed Surveyor in the State of Texas. I am a duly licensed Surveyor in the State of Texas. I am a duly licensed Surveyor in the State of Texas.