

PLAT RECORDING SHEET

PLAT NAME: Sienna Village of Bees Creek, Section 6

PLAT NO: _____

ACREAGE: 11.834

LEAGUE: Moses Shipman League

ABSTRACT NUMBER: 86

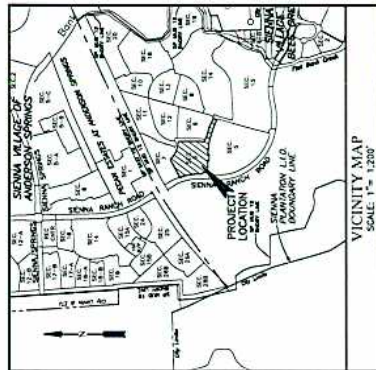
NUMBER OF BLOCKS: 1

NUMBER OF LOTS: 21

NUMBER OF RESERVES: 4

OWNERS: Sienna/Johnson North, L.P.

(DEPUTY CLERK)



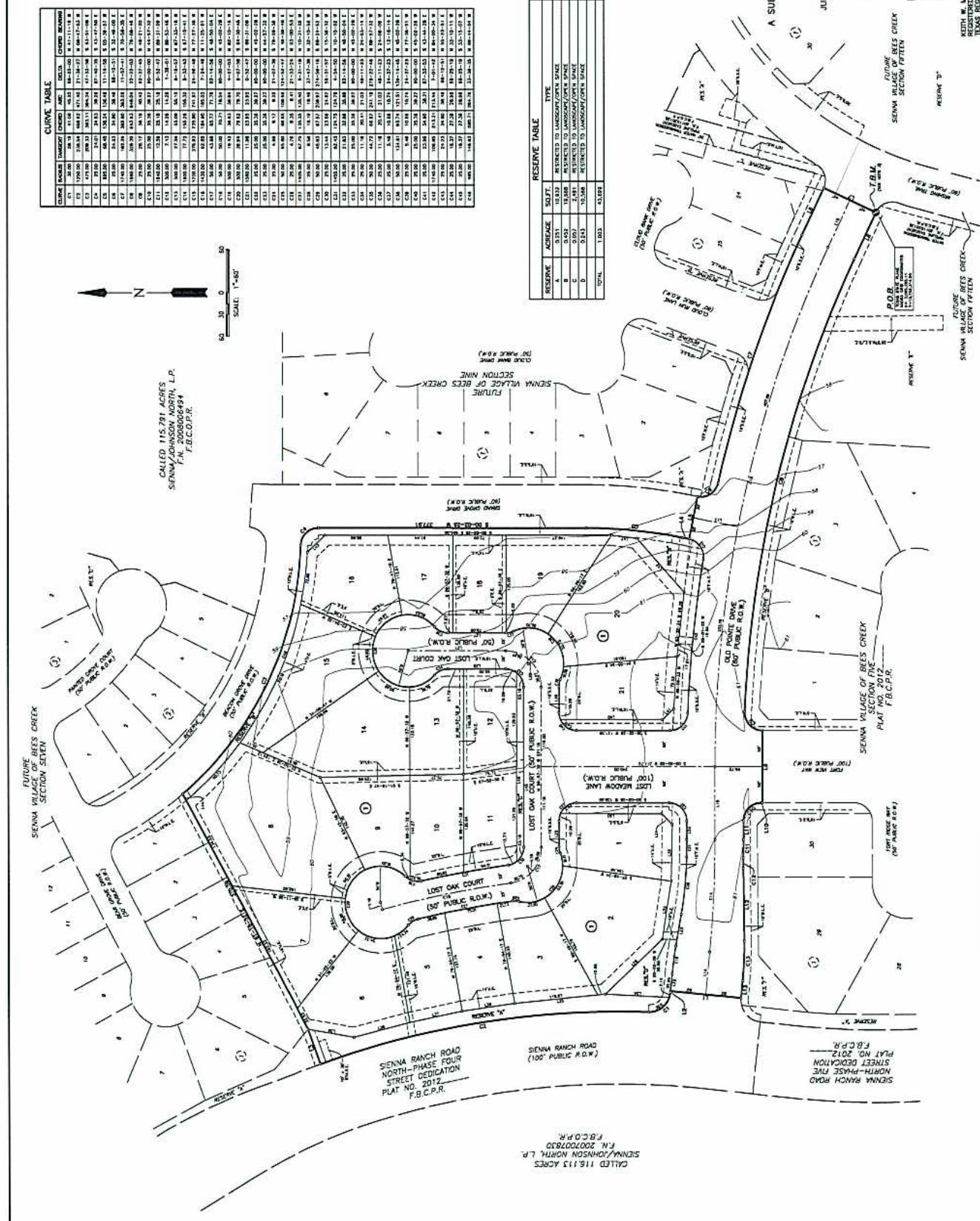
VICINITY MAP
SCALE 1" = 1,200'
KEY MAP NO. 6490

CURVE TABLE

CURVE NUMBER	TANGENT	CHORD	ARC	ANGLE	CHORD BEARING
C1	179.00	179.00	179.00	90.00	S 90.00-00.00 E
C2	179.00	179.00	179.00	90.00	S 90.00-00.00 E
C3	179.00	179.00	179.00	90.00	S 90.00-00.00 E
C4	179.00	179.00	179.00	90.00	S 90.00-00.00 E
C5	179.00	179.00	179.00	90.00	S 90.00-00.00 E
C6	179.00	179.00	179.00	90.00	S 90.00-00.00 E
C7	179.00	179.00	179.00	90.00	S 90.00-00.00 E
C8	179.00	179.00	179.00	90.00	S 90.00-00.00 E
C9	179.00	179.00	179.00	90.00	S 90.00-00.00 E
C10	179.00	179.00	179.00	90.00	S 90.00-00.00 E
C11	179.00	179.00	179.00	90.00	S 90.00-00.00 E
C12	179.00	179.00	179.00	90.00	S 90.00-00.00 E
C13	179.00	179.00	179.00	90.00	S 90.00-00.00 E
C14	179.00	179.00	179.00	90.00	S 90.00-00.00 E
C15	179.00	179.00	179.00	90.00	S 90.00-00.00 E
C16	179.00	179.00	179.00	90.00	S 90.00-00.00 E
C17	179.00	179.00	179.00	90.00	S 90.00-00.00 E
C18	179.00	179.00	179.00	90.00	S 90.00-00.00 E
C19	179.00	179.00	179.00	90.00	S 90.00-00.00 E
C20	179.00	179.00	179.00	90.00	S 90.00-00.00 E
C21	179.00	179.00	179.00	90.00	S 90.00-00.00 E
C22	179.00	179.00	179.00	90.00	S 90.00-00.00 E
C23	179.00	179.00	179.00	90.00	S 90.00-00.00 E
C24	179.00	179.00	179.00	90.00	S 90.00-00.00 E
C25	179.00	179.00	179.00	90.00	S 90.00-00.00 E
C26	179.00	179.00	179.00	90.00	S 90.00-00.00 E
C27	179.00	179.00	179.00	90.00	S 90.00-00.00 E
C28	179.00	179.00	179.00	90.00	S 90.00-00.00 E
C29	179.00	179.00	179.00	90.00	S 90.00-00.00 E
C30	179.00	179.00	179.00	90.00	S 90.00-00.00 E
C31	179.00	179.00	179.00	90.00	S 90.00-00.00 E
C32	179.00	179.00	179.00	90.00	S 90.00-00.00 E
C33	179.00	179.00	179.00	90.00	S 90.00-00.00 E
C34	179.00	179.00	179.00	90.00	S 90.00-00.00 E
C35	179.00	179.00	179.00	90.00	S 90.00-00.00 E
C36	179.00	179.00	179.00	90.00	S 90.00-00.00 E
C37	179.00	179.00	179.00	90.00	S 90.00-00.00 E
C38	179.00	179.00	179.00	90.00	S 90.00-00.00 E
C39	179.00	179.00	179.00	90.00	S 90.00-00.00 E
C40	179.00	179.00	179.00	90.00	S 90.00-00.00 E
C41	179.00	179.00	179.00	90.00	S 90.00-00.00 E
C42	179.00	179.00	179.00	90.00	S 90.00-00.00 E
C43	179.00	179.00	179.00	90.00	S 90.00-00.00 E
C44	179.00	179.00	179.00	90.00	S 90.00-00.00 E
C45	179.00	179.00	179.00	90.00	S 90.00-00.00 E
C46	179.00	179.00	179.00	90.00	S 90.00-00.00 E
C47	179.00	179.00	179.00	90.00	S 90.00-00.00 E
C48	179.00	179.00	179.00	90.00	S 90.00-00.00 E
C49	179.00	179.00	179.00	90.00	S 90.00-00.00 E
C50	179.00	179.00	179.00	90.00	S 90.00-00.00 E
C51	179.00	179.00	179.00	90.00	S 90.00-00.00 E
C52	179.00	179.00	179.00	90.00	S 90.00-00.00 E
C53	179.00	179.00	179.00	90.00	S 90.00-00.00 E
C54	179.00	179.00	179.00	90.00	S 90.00-00.00 E
C55	179.00	179.00	179.00	90.00	S 90.00-00.00 E
C56	179.00	179.00	179.00	90.00	S 90.00-00.00 E
C57	179.00	179.00	179.00	90.00	S 90.00-00.00 E
C58	179.00	179.00	179.00	90.00	S 90.00-00.00 E
C59	179.00	179.00	179.00	90.00	S 90.00-00.00 E
C60	179.00	179.00	179.00	90.00	S 90.00-00.00 E
C61	179.00	179.00	179.00	90.00	S 90.00-00.00 E
C62	179.00	179.00	179.00	90.00	S 90.00-00.00 E
C63	179.00	179.00	179.00	90.00	S 90.00-00.00 E
C64	179.00	179.00	179.00	90.00	S 90.00-00.00 E
C65	179.00	179.00	179.00	90.00	S 90.00-00.00 E
C66	179.00	179.00	179.00	90.00	S 90.00-00.00 E
C67	179.00	179.00	179.00	90.00	S 90.00-00.00 E
C68	179.00	179.00	179.00	90.00	S 90.00-00.00 E
C69	179.00	179.00	179.00	90.00	S 90.00-00.00 E
C70	179.00	179.00	179.00	90.00	S 90.00-00.00 E
C71	179.00	179.00	179.00	90.00	S 90.00-00.00 E
C72	179.00	179.00	179.00	90.00	S 90.00-00.00 E
C73	179.00	179.00	179.00	90.00	S 90.00-00.00 E
C74	179.00	179.00	179.00	90.00	S 90.00-00.00 E
C75	179.00	179.00	179.00	90.00	S 90.00-00.00 E
C76	179.00	179.00	179.00	90.00	S 90.00-00.00 E
C77	179.00	179.00	179.00	90.00	S 90.00-00.00 E
C78	179.00	179.00	179.00	90.00	S 90.00-00.00 E
C79	179.00	179.00	179.00	90.00	S 90.00-00.00 E
C80	179.00	179.00	179.00	90.00	S 90.00-00.00 E
C81	179.00	179.00	179.00	90.00	S 90.00-00.00 E
C82	179.00	179.00	179.00	90.00	S 90.00-00.00 E
C83	179.00	179.00	179.00	90.00	S 90.00-00.00 E
C84	179.00	179.00	179.00	90.00	S 90.00-00.00 E
C85	179.00	179.00	179.00	90.00	S 90.00-00.00 E
C86	179.00	179.00	179.00	90.00	S 90.00-00.00 E
C87	179.00	179.00	179.00	90.00	S 90.00-00.00 E
C88	179.00	179.00	179.00	90.00	S 90.00-00.00 E
C89	179.00	179.00	179.00	90.00	S 90.00-00.00 E
C90	179.00	179.00	179.00	90.00	S 90.00-00.00 E
C91	179.00	179.00	179.00	90.00	S 90.00-00.00 E
C92	179.00	179.00	179.00	90.00	S 90.00-00.00 E
C93	179.00	179.00	179.00	90.00	S 90.00-00.00 E
C94	179.00	179.00	179.00	90.00	S 90.00-00.00 E
C95	179.00	179.00	179.00	90.00	S 90.00-00.00 E
C96	179.00	179.00	179.00	90.00	S 90.00-00.00 E
C97	179.00	179.00	179.00	90.00	S 90.00-00.00 E
C98	179.00	179.00	179.00	90.00	S 90.00-00.00 E
C99	179.00	179.00	179.00	90.00	S 90.00-00.00 E
C100	179.00	179.00	179.00	90.00	S 90.00-00.00 E



CALL 115.791 ACRES
SIENNA/JOHNSON NORTH, L.P.
F.N. 20080806494
F.B.C.P.R.



LINE TABLE

LINE	BEARING	DISTANCE
L1	S 89-00-00.00 E	87.75
L2	S 89-00-00.00 E	87.75
L3	S 89-00-00.00 E	87.75
L4	S 89-00-00.00 E	87.75
L5	S 89-00-00.00 E	87.75
L6	S 89-00-00.00 E	87.75
L7	S 89-00-00.00 E	87.75
L8	S 89-00-00.00 E	87.75
L9	S 89-00-00.00 E	87.75
L10	S 89-00-00.00 E	87.75
L11	S 89-00-00.00 E	87.75
L12	S 89-00-00.00 E	87.75
L13	S 89-00-00.00 E	87.75
L14	S 89-00-00.00 E	87.75
L15	S 89-00-00.00 E	87.75
L16	S 89-00-00.00 E	87.75
L17	S 89-00-00.00 E	87.75
L18	S 89-00-00.00 E	87.75
L19	S 89-00-00.00 E	87.75
L20	S 89-00-00.00 E	87.75
L21	S 89-00-00.00 E	87.75

RESERVE TABLE

RESERVE	ACREAGE	SQ. FT.	TYPE
A	0.00	0.00	RESTRICTED TO LANDSCAPE/OPEN SPACE
B	0.00	0.00	RESTRICTED TO LANDSCAPE/OPEN SPACE
C	0.00	0.00	RESTRICTED TO LANDSCAPE/OPEN SPACE
D	0.00	0.00	RESTRICTED TO LANDSCAPE/OPEN SPACE
TOTAL	0.00	0.00	

SIENNA
VILLAGE OF BEES CREEK
SECTION SIX

A SUBDIVISION OF 11,824 ACRES OF LAND SITUATED IN THE
MOSES CHINA TRACT 86,
FORT BEND COUNTY, TEXAS.

21 LOTS 4 RESERVES (1.003 ACRES) 1 BLOCK
JUNE 13, 2012 JOB NO. 1194-1306-309

OWNERS:
SIENNA/JOHNSON NORTH, L.P.
MICHAEL J. SMITH, VICE PRESIDENT/GENERAL MANAGER
8777 SIENNA PARKWAY, SUITE 100, MISSOURI CITY, TEXAS 77459
PH. (281) 778-7777

ENGINEER:
LJA Engineering Inc.
2929 Blinnpark Drive
Suite 600
Houston, Texas 77042
Phone 713.953.3200
Fax 713.953.0235
FBI - F-1350
TX REGISTRATION NO. 107281

SIENNA VILLAGES PHASE FOUR
STREET RECONSTRUCTION
NORTH-PHASE FIVE
PLAT NO. 2012
F.B.C.P.R.

SIENNA VILLAGES PHASE FIVE
STREET RECONSTRUCTION
SECTION FIFTEEN
PLAT NO. 2012
F.B.C.P.R.

SIENNA VILLAGES PHASE SIX
STREET RECONSTRUCTION
SECTION SIXTEEN
PLAT NO. 2012
F.B.C.P.R.

SIENNA VILLAGES PHASE SEVEN
STREET RECONSTRUCTION
SECTION SEVENTEEN
PLAT NO. 2012
F.B.C.P.R.

SIENNA VILLAGES PHASE EIGHT
STREET RECONSTRUCTION
SECTION EIGHTEEN
PLAT NO. 2012
F.B.C.P.R.