

PLAT RECORDING SHEET

PLAT NAME: Avalon at Riverstone, Sec. 1

PLAT NO: _____

ACREAGE: 47.3149

LEAGUE: William Little Survey

ABSTRACT NUMBER: 54

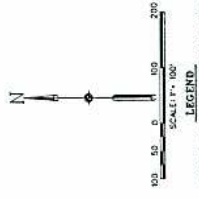
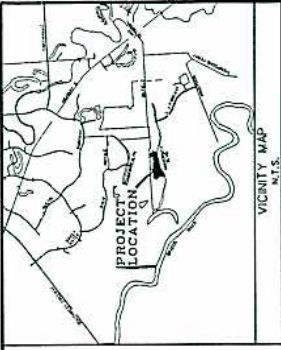
NUMBER OF BLOCKS: 5

NUMBER OF LOTS: 86

NUMBER OF RESERVES: 12

OWNERS: Taylor Morrison of Texas, Inc.

(DEPUTY CLERK)



AVALON AT RIVERSTONE SECTION ONE

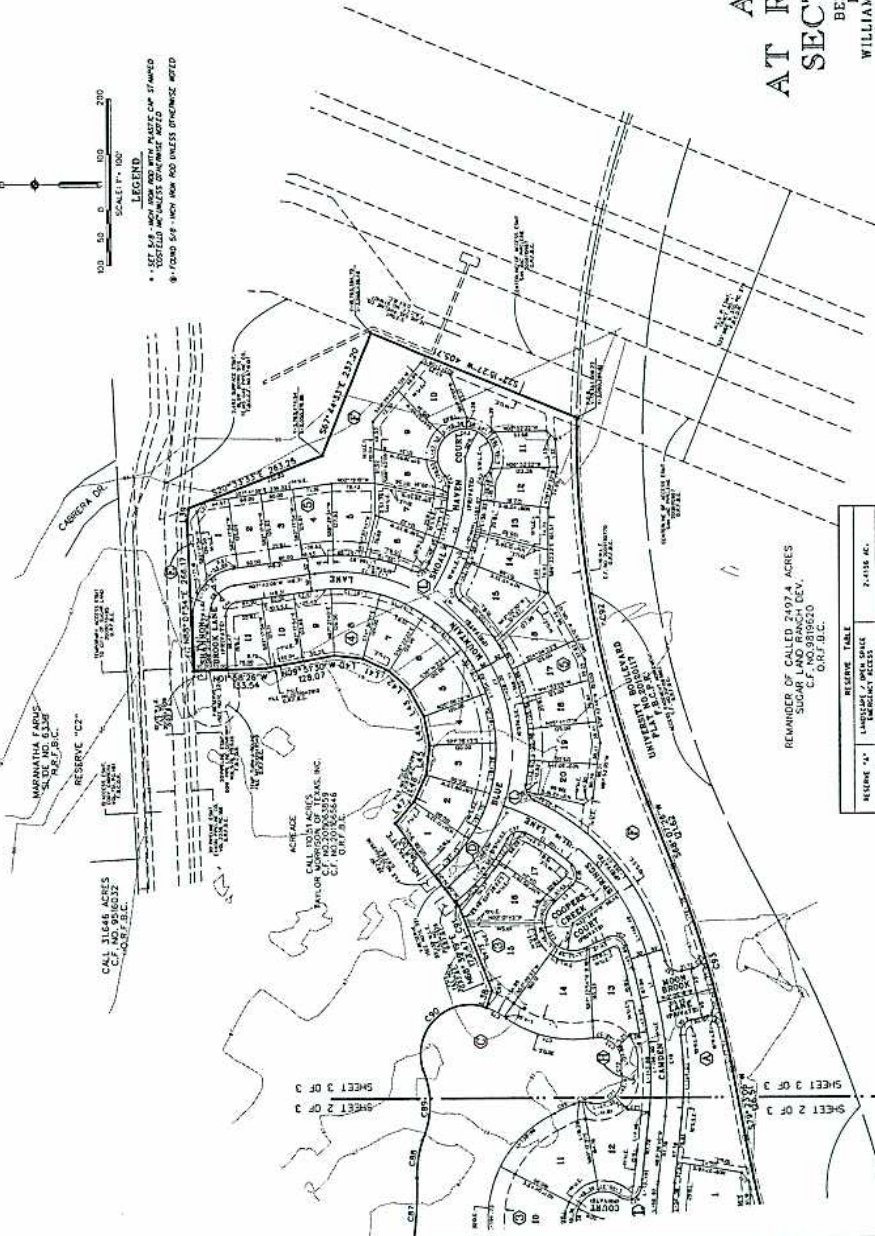
BEING 47,314.9 ACRES
LOCATED IN THE
WILLIAM LITTLE SURVEY, A-54,
FORT BEND COUNTY, TEXAS

86 LOTS 5 BLOCKS 12 RESERVES
DATE: MAY, 2012

OWNER:
TAYLOR MORRISON OF TEXAS INC.
3155 W. LAMAR AVENUE, SUITE 100
HOUSTON, TEXAS 77057

ENGINEER/SURVEYOR:
Costello, Inc.
11000 West Loop South, Suite 400
Houston, Texas 77042
(713) 865-1000
REGISTERED PROFESSIONAL ENGINEER

PLANNER:
KERRY R. GILBERT & ASSOCIATES, INC.
LAND PLANNING CONSULTANTS
15000 CHICO BLVD., SUITE A 150
HOUSTON, TEXAS 77057



REMANUFAKTURE FABRIC
SUGAR LAND RANCH DEV.
CF. NO. 891820
GR. 7 B.C.

RESERVE TABLE	RESERVE TABLE
RESERVE "A" LANDSCAPE / OPEN SPACE	2,418 AC.
RESERVE "B" LANDSCAPE / OPEN SPACE	3,413 AC.
RESERVE "C" LANDSCAPE / OPEN SPACE	3,358 AC.
RESERVE "D" LANDSCAPE / OPEN SPACE	2,000 AC.
RESERVE "E" LANDSCAPE / OPEN SPACE	2,133 AC.
RESERVE "F" LANDSCAPE / OPEN SPACE	2,532 AC.
RESERVE "G" LANDSCAPE / OPEN SPACE	2,188 AC.
RESERVE "H" LANDSCAPE / OPEN SPACE	2,184 AC.
RESERVE "I" LANDSCAPE / OPEN SPACE	2,207 AC.
RESERVE "J" LANDSCAPE / OPEN SPACE	2,101 AC.
RESERVE "K" LANDSCAPE / OPEN SPACE	2,193 AC.
RESERVE "L" RESERVES, AMPLIFY ACCESS / PUBLIC UTILITIES	4,519 AC.
TOTAL	22,118 AC.

LOT	ACRES	RESERVE
1	0.10	A
2	0.10	A
3	0.10	A
4	0.10	A
5	0.10	A
6	0.10	A
7	0.10	A
8	0.10	A
9	0.10	A
10	0.10	A
11	0.10	A
12	0.10	A
13	0.10	A
14	0.10	A
15	0.10	A
16	0.10	A
17	0.10	A
18	0.10	A
19	0.10	A
20	0.10	A
21	0.10	A
22	0.10	A
23	0.10	A
24	0.10	A
25	0.10	A
26	0.10	A
27	0.10	A
28	0.10	A
29	0.10	A
30	0.10	A
31	0.10	A
32	0.10	A
33	0.10	A
34	0.10	A
35	0.10	A
36	0.10	A
37	0.10	A
38	0.10	A
39	0.10	A
40	0.10	A
41	0.10	A
42	0.10	A
43	0.10	A
44	0.10	A
45	0.10	A
46	0.10	A
47	0.10	A
48	0.10	A
49	0.10	A
50	0.10	A
51	0.10	A
52	0.10	A
53	0.10	A
54	0.10	A
55	0.10	A
56	0.10	A
57	0.10	A
58	0.10	A
59	0.10	A
60	0.10	A
61	0.10	A
62	0.10	A
63	0.10	A
64	0.10	A
65	0.10	A
66	0.10	A

RESERVE TABLE	RESERVE TABLE
RESERVE "A"	2,418 AC.
RESERVE "B"	3,413 AC.
RESERVE "C"	3,358 AC.
RESERVE "D"	2,000 AC.
RESERVE "E"	2,133 AC.
RESERVE "F"	2,532 AC.
RESERVE "G"	2,188 AC.
RESERVE "H"	2,184 AC.
RESERVE "I"	2,207 AC.
RESERVE "J"	2,101 AC.
RESERVE "K"	2,193 AC.
RESERVE "L"	4,519 AC.
TOTAL	22,118 AC.