

PLAT RECORDING SHEET

PLAT NAME: Long Meadow Farms, Sec. 22

PLAT NO: _____

ACREAGE: 13.2840

LEAGUE: Randall Jones Survey

ABSTRACT NUMBER: 42

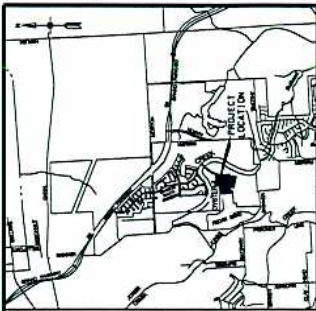
NUMBER OF BLOCKS: 3

NUMBER OF LOTS: 28

NUMBER OF RESERVES: 3

OWNERS: LM Development, LP

(DEPUTY CLERK)



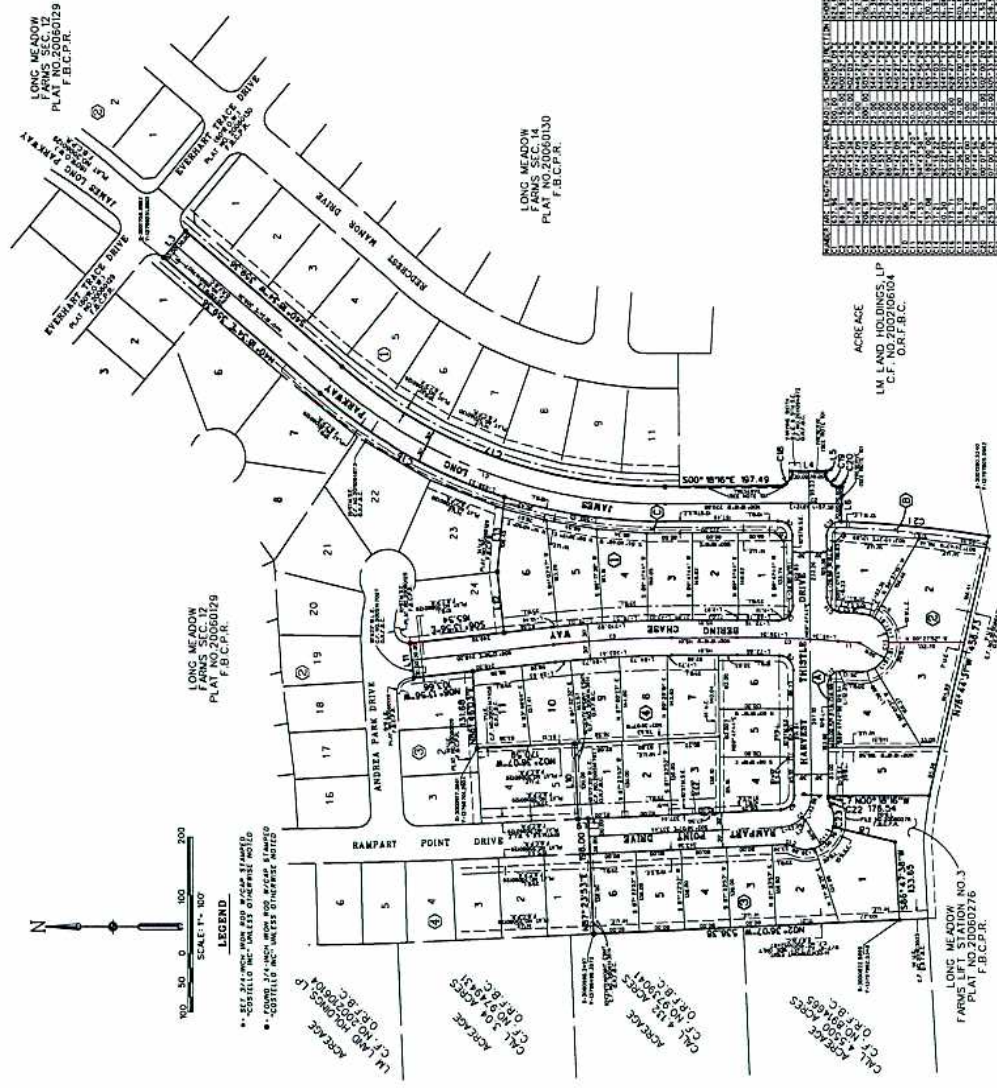
FORT BEND COUNTY KEY MAP 2650/566A

- NOTES:
1. THIS MAP IS A SUBDIVISION OF LAND AND NOT A MAP OF LAND. THE BOUNDARIES OF THE LOTS ARE NOT GUARANTEED BY THIS MAP. THE BOUNDARIES OF THE LOTS ARE GUARANTEED BY THE SURVEY AND THE RECORDS OF THE COUNTY CLERK.
 2. THE SURVEY IS BASED ON THE ASSUMPTION THAT THE BOUNDARIES OF THE LOTS ARE AS SHOWN ON THIS MAP. THE SURVEY IS NOT A GUARANTEE OF THE ACCURACY OF THE BOUNDARIES OF THE LOTS.
 3. THE SURVEY IS BASED ON THE ASSUMPTION THAT THE BOUNDARIES OF THE LOTS ARE AS SHOWN ON THIS MAP. THE SURVEY IS NOT A GUARANTEE OF THE ACCURACY OF THE BOUNDARIES OF THE LOTS.
 4. THE SURVEY IS BASED ON THE ASSUMPTION THAT THE BOUNDARIES OF THE LOTS ARE AS SHOWN ON THIS MAP. THE SURVEY IS NOT A GUARANTEE OF THE ACCURACY OF THE BOUNDARIES OF THE LOTS.
 5. THE SURVEY IS BASED ON THE ASSUMPTION THAT THE BOUNDARIES OF THE LOTS ARE AS SHOWN ON THIS MAP. THE SURVEY IS NOT A GUARANTEE OF THE ACCURACY OF THE BOUNDARIES OF THE LOTS.
 6. THE SURVEY IS BASED ON THE ASSUMPTION THAT THE BOUNDARIES OF THE LOTS ARE AS SHOWN ON THIS MAP. THE SURVEY IS NOT A GUARANTEE OF THE ACCURACY OF THE BOUNDARIES OF THE LOTS.
 7. THE SURVEY IS BASED ON THE ASSUMPTION THAT THE BOUNDARIES OF THE LOTS ARE AS SHOWN ON THIS MAP. THE SURVEY IS NOT A GUARANTEE OF THE ACCURACY OF THE BOUNDARIES OF THE LOTS.
 8. THE SURVEY IS BASED ON THE ASSUMPTION THAT THE BOUNDARIES OF THE LOTS ARE AS SHOWN ON THIS MAP. THE SURVEY IS NOT A GUARANTEE OF THE ACCURACY OF THE BOUNDARIES OF THE LOTS.
 9. THE SURVEY IS BASED ON THE ASSUMPTION THAT THE BOUNDARIES OF THE LOTS ARE AS SHOWN ON THIS MAP. THE SURVEY IS NOT A GUARANTEE OF THE ACCURACY OF THE BOUNDARIES OF THE LOTS.
 10. THE SURVEY IS BASED ON THE ASSUMPTION THAT THE BOUNDARIES OF THE LOTS ARE AS SHOWN ON THIS MAP. THE SURVEY IS NOT A GUARANTEE OF THE ACCURACY OF THE BOUNDARIES OF THE LOTS.
 11. THE SURVEY IS BASED ON THE ASSUMPTION THAT THE BOUNDARIES OF THE LOTS ARE AS SHOWN ON THIS MAP. THE SURVEY IS NOT A GUARANTEE OF THE ACCURACY OF THE BOUNDARIES OF THE LOTS.
 12. THE SURVEY IS BASED ON THE ASSUMPTION THAT THE BOUNDARIES OF THE LOTS ARE AS SHOWN ON THIS MAP. THE SURVEY IS NOT A GUARANTEE OF THE ACCURACY OF THE BOUNDARIES OF THE LOTS.
 13. THE SURVEY IS BASED ON THE ASSUMPTION THAT THE BOUNDARIES OF THE LOTS ARE AS SHOWN ON THIS MAP. THE SURVEY IS NOT A GUARANTEE OF THE ACCURACY OF THE BOUNDARIES OF THE LOTS.
 14. THE SURVEY IS BASED ON THE ASSUMPTION THAT THE BOUNDARIES OF THE LOTS ARE AS SHOWN ON THIS MAP. THE SURVEY IS NOT A GUARANTEE OF THE ACCURACY OF THE BOUNDARIES OF THE LOTS.
 15. THE SURVEY IS BASED ON THE ASSUMPTION THAT THE BOUNDARIES OF THE LOTS ARE AS SHOWN ON THIS MAP. THE SURVEY IS NOT A GUARANTEE OF THE ACCURACY OF THE BOUNDARIES OF THE LOTS.
 16. THE SURVEY IS BASED ON THE ASSUMPTION THAT THE BOUNDARIES OF THE LOTS ARE AS SHOWN ON THIS MAP. THE SURVEY IS NOT A GUARANTEE OF THE ACCURACY OF THE BOUNDARIES OF THE LOTS.
 17. THE SURVEY IS BASED ON THE ASSUMPTION THAT THE BOUNDARIES OF THE LOTS ARE AS SHOWN ON THIS MAP. THE SURVEY IS NOT A GUARANTEE OF THE ACCURACY OF THE BOUNDARIES OF THE LOTS.
 18. THE SURVEY IS BASED ON THE ASSUMPTION THAT THE BOUNDARIES OF THE LOTS ARE AS SHOWN ON THIS MAP. THE SURVEY IS NOT A GUARANTEE OF THE ACCURACY OF THE BOUNDARIES OF THE LOTS.

LONG MEADOW FARMS SEC. 22

A SUBDIVISION OF 13,284.0 ACRES
LOCATED IN THE
RANDALL JONES SURVEY, A-42
FORT BEND COUNTY, TEXAS

28 LOTS 4 BLOCKS 3 RESERVES
DATE: MARCH, 2012 SCALE: 1"=100'



LOT	ACREAGE	RESERVE
1	0.1775	A
2	0.1775	A
3	0.1775	A
4	0.1775	A
5	0.1775	A
6	0.1775	A
7	0.1775	A
8	0.1775	A
9	0.1775	A
10	0.1775	A
11	0.1775	A
12	0.1775	A
13	0.1775	A
14	0.1775	A
15	0.1775	A
16	0.1775	A
17	0.1775	A
18	0.1775	A
19	0.1775	A
20	0.1775	A
21	0.1775	A
22	0.1775	A
23	0.1775	A
24	0.1775	A
25	0.1775	A
26	0.1775	A
27	0.1775	A
28	0.1775	A

- (A) RESTRICTED RESERVE "A"
0.0424 ACRES - 1,847 SQ. FT.
RESTRICTED TO LANDSCAPE/OPEN SPACE
- (B) RESTRICTED RESERVE "B"
0.1775 ACRES - 7,733 SQ. FT.
RESTRICTED TO LANDSCAPE/OPEN SPACE
- (C) RESTRICTED RESERVE "C"
0.2737 ACRES - 12,161 SQ. FT.
RESTRICTED TO LANDSCAPE/OPEN SPACE