

PLAT RECORDING SHEET

PLAT NAME: Cinco Ranch Southwest, Section 66

PLAT NO: _____

ACREAGE: 18.86

LEAGUE: John Rich Survey and W. M. Andrus Survey

ABSTRACT NUMBER: 706, 752

NUMBER OF BLOCKS: 4

NUMBER OF LOTS: 70

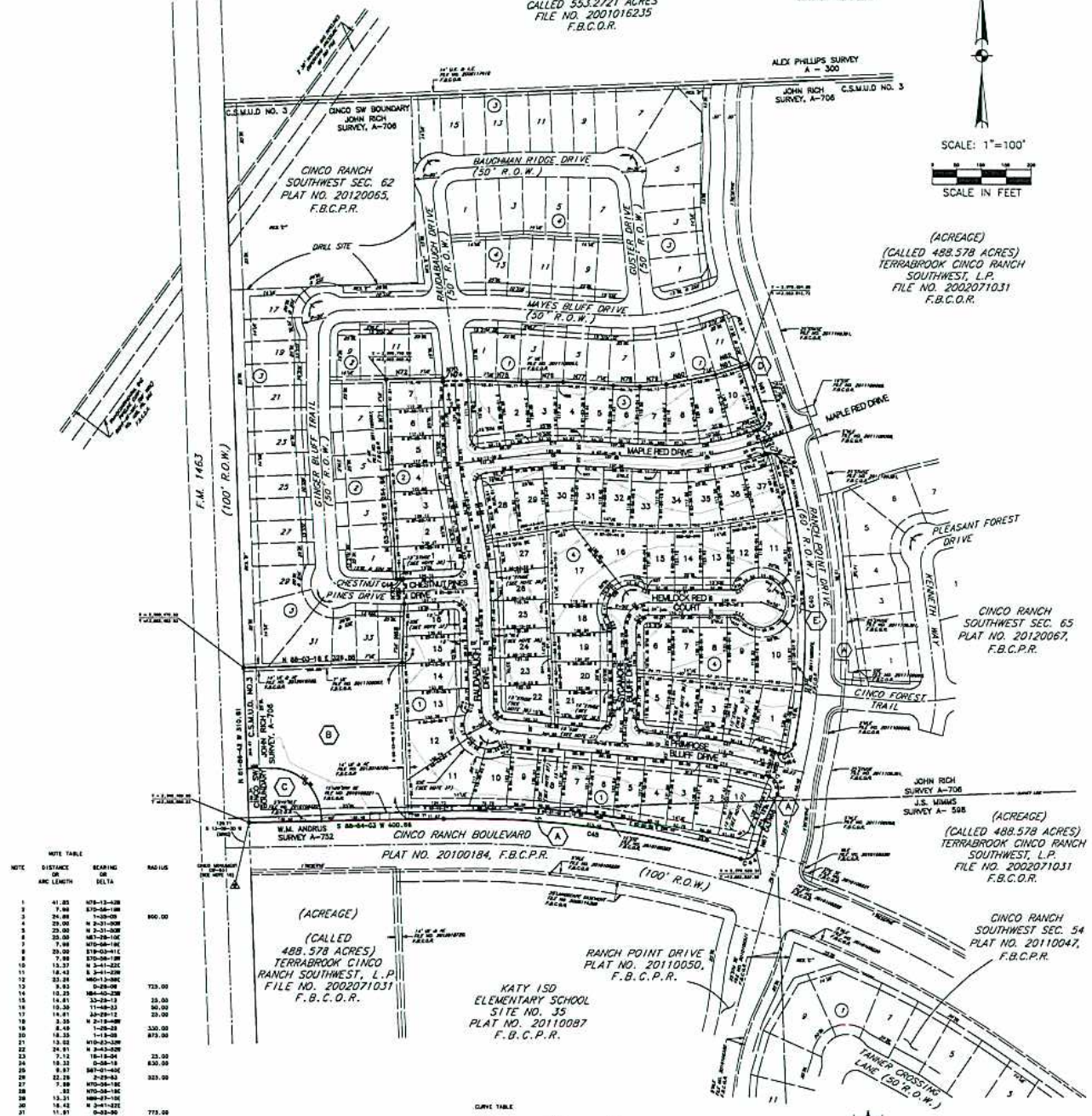
NUMBER OF RESERVES: 5

OWNERS: Terrabrook Cinco Ranch Southwest, L.P.

(DEPUTY CLERK)

- (A) RESTRICTED RESERVE "A" (RESTRICTED TO LANDSCAPE / OPEN SPACE PURPOSES ONLY) 0.2476 AC. 12.886 SQ.FT.
- (B) RESTRICTED RESERVE "B" (RESTRICTED COMMERCIAL PURPOSES ONLY) 2.034 AC. 88,886 SQ.FT.
- (C) RESTRICTED RESERVE "C" (RESTRICTED TO LANDSCAPE / OPEN SPACE PURPOSES ONLY) 0.2618 AC. 13,318 SQ.FT.
- (D) RESTRICTED RESERVE "D" (RESTRICTED TO LANDSCAPE / OPEN SPACE PURPOSES ONLY) 0.2476 AC. 12,887 SQ.FT.
- (E) RESTRICTED RESERVE "E" (RESTRICTED TO LANDSCAPE / OPEN SPACE PURPOSES ONLY) 0.2483 AC. 12,843 SQ.FT.

PENSACOLA PALMS DEVELOPMENT CO., INC.
CALLED 553.2721 ACRES
FILE NO. 2001016235
F.B.C.D.R.



NOTE TABLE

NOTE	DISTANCE OR ARC LENGTH	BEARING OR DELTA	RADIUS
1	41.85	N78-13-28W	890.00
2	7.68	S70-00-00W	890.00
3	24.88	S70-00-00W	890.00
4	20.00	N 2-31-00E	890.00
5	20.00	N 2-31-00E	890.00
6	30.00	N83-28-10E	890.00
7	7.68	N 7-00-00E	890.00
8	20.00	S70-00-00W	890.00
9	7.68	S70-00-00W	890.00
10	13.37	N 3-41-22E	890.00
11	18.43	N 3-41-22E	890.00
12	32.84	N60-13-08E	890.00
13	8.52	S 2-00-00E	735.00
14	12.23	N64-00-22W	25.00
15	14.81	S 2-00-00E	25.00
16	19.30	N 11-48-23	33.00
17	14.81	S 2-00-00E	33.00
18	3.35	N 2-18-48W	300.00
19	8.49	N 2-18-48W	300.00
20	18.35	N 1-18-28	870.00
21	13.52	N70-00-00W	870.00
22	24.81	N 3-43-20E	25.00
23	7.12	N 10-1-24	830.00
24	18.32	S 2-00-18	830.00
25	8.52	N 70-00-00E	830.00
26	22.28	S 2-00-18	830.00
27	7.88	N70-00-00E	830.00
28	33	N70-00-18E	830.00
29	13.21	N70-00-18E	830.00
30	18.43	N 3-41-22E	775.00
31	8.52	N 70-00-18E	775.00
32	14.44	S 80-01-58W	35.00
33	14.44	S 80-01-58W	35.00
34	7.58	S 80-01-58W	35.00
35	13.80	S 80-01-58W	35.00
36	7.58	N 13-14-14	35.00
37	13.80	N 13-14-14	35.00
38	7.58	S 80-01-58W	35.00
39	13.80	S 80-01-58W	35.00
40	7.58	S 80-01-58W	35.00
41	3.18	S 3-38-54E	833.00
42	18.27	S 3-38-54E	833.00
43	1.89	N 2-00-00E	380.00
44	8.44	N 1-00-10W	380.00
45	11.08	N 1-00-10W	380.00
46	7.88	N70-00-18E	380.00
47	4.66	S 2-00-27	380.00
48	11.08	N 1-00-10W	380.00
49	7.88	N70-00-18E	380.00
50	4.66	S 2-00-27	380.00
51	26.32	N60-03-54E	190.00
52	12.80	N60-03-54E	190.00
53	64.28	S60-02-10W	190.00
54	12.80	N60-03-54E	190.00
55	50.04	S60-01-52E	190.00
56	12.80	N60-03-54E	190.00
57	8.91	N 1-00-42W	190.00
58	40.88	N60-03-54E	190.00
59	21.28	N 47-14-38W	190.00
60	38.27	N 47-14-38W	190.00
61	108.10	S 13-03-41E	190.00
62	91.14	S 13-03-41E	190.00
63	90.00	S 13-03-41E	190.00
64	91.14	S 13-03-41E	190.00
65	90.00	S 13-03-41E	190.00
66	91.14	S 13-03-41E	190.00
67	90.00	S 13-03-41E	190.00
68	91.14	S 13-03-41E	190.00
69	90.00	S 13-03-41E	190.00
70	91.14	S 13-03-41E	190.00
71	90.00	S 13-03-41E	190.00
72	91.14	S 13-03-41E	190.00
73	90.00	S 13-03-41E	190.00
74	91.14	S 13-03-41E	190.00
75	90.00	S 13-03-41E	190.00
76	91.14	S 13-03-41E	190.00
77	90.00	S 13-03-41E	190.00
78	91.14	S 13-03-41E	190.00
79	90.00	S 13-03-41E	190.00
80	91.14	S 13-03-41E	190.00
81	90.00	S 13-03-41E	190.00
82	91.14	S 13-03-41E	190.00
83	90.00	S 13-03-41E	190.00
84	91.14	S 13-03-41E	190.00
85	90.00	S 13-03-41E	190.00
86	91.14	S 13-03-41E	190.00
87	90.00	S 13-03-41E	190.00
88	91.14	S 13-03-41E	190.00
89	90.00	S 13-03-41E	190.00
90	91.14	S 13-03-41E	190.00
91	90.00	S 13-03-41E	190.00
92	91.14	S 13-03-41E	190.00

CURVE TABLE

NOTE	ARC LENGTH	DELTA	RADIUS	CHORD	BEARING	PISTACHE
1	110.2	8-27-42	700.00	600-20-20W	110.28	
2	72.43	83-48-47	50.00	N 5-10-31W	68.28	
3	138.86	8-42-54	800.00	N 60-20-20W	138.74	
4	88.71	7-01-42	900.00	N 60-27-19W	88.50	
5	211.91	22-02-01	900.00	S 81-07-02W	212.27	
6	133.25	8-42-54	800.00	S 80-00-20W	133.12	
7	138.86	8-42-54	100.00	S 84-31-02E	138.27	
8	27.88	8-42-57	900.00	N 01-31-09E	27.87	
9	78.89	8-42-57	90.00	N 60-20-20E	79.03	
10	107.07	8-27-42	720.00	N 60-20-20E	106.87	
11	14.81	33-38-12	25.00	S 78-33-00W	15.00	
12	130.87	143-06-10	30.00	N 3-10-31W	88.58	
13	14.81	33-38-12	25.00	S 78-33-00W	15.00	
14	38.84	8-42-57	25.00	N 67-09-10E	38.82	
15	61.64	8-42-57	25.00	N 60-20-20E	61.81	
16	38.84	8-42-57	25.00	N 60-20-20E	38.79	
17	14.81	33-38-12	25.00	N 60-20-20E	14.81	
18	38.71	3-43-48	870.00	N 60-33-00W	38.70	
19	27.88	8-42-57	80.00	N 60-20-20E	27.87	
20	251.89	23-23-01	520.00	N 81-07-23E	250.63	
21	182.43	37-03-01	570.00	N 80-33-02E	182.74	
22	86.98	8-42-51	840.00	N 80-00-00W	86.88	
23	28.89	8-42-51	870.00	N 80-33-02E	28.88	
24	140.70	8-42-54	820.00	N 80-03-02E	140.38	
25	38.81	8-42-51	870.00	N 80-33-02E	38.81	
26	38.81	8-42-51	870.00	N 80-33-02E	38.81	
27	38.81	8-42-51	870.00	N 80-33-02E	38.81	
28	38.81	8-42-51	870.00	N 80-33-02E	38.81	
29	38.81	8-42-51	870.00	N 80-33-02E	38.81	
30	38.81	8-42-51	870.00	N 80-33-02E	38.81	
31	21.00	48-11-23	25.00	N 60-20-20E	21.00	
32	21.00	48-11-23	25.00	N 60-20-20E	21.00	
33	21.00	48-11-23	25.00	N 60-20-20E	21.00	
34	21.00	48-11-23	25.00	N 60-20-20E	21.00	
35	21.00	48-11-23	25.00	N 60-20-20E	21.00	
36	21.00	48-11-23	25.00	N 60-20-20E	21.00	
37	21.00	48-11-23	25.00	N 60-20-20E	21.00	
38	21.00	48-11-23	25.00	N 60-20-20E	21.00	
39	21.00	48-11-23	25.00	N 60-20-20E	21.00	
40	21.00	48-11-23	25.00	N 60-20-20E	21.00	
41	21.00	48-11-23	25.00	N 60-20-20E	21.00	
42	21.00	48-11-23	25.00	N 60-20-20E	21.00	
43	21.00	48-11-23	25.00	N 60-20-20E	21.00	
44	21.00	48-11-23	25.00	N 60-20-20E	21.00	
45	21.00	48-11-23	25.00	N 60-20-20E	21.00	
46	21.00	48-11-23	25.00	N 60-20-20E	21.00	
47	21.00	48-11-23	25.00	N 60-20-20E	21.00	
48	21.00	48-11-23	25.00	N 60-20-20E	21.00	
49	21.00	48-11-23	25.00	N 60-20-20E	21.00	
50	21.00	48-11-23	25.00	N 60-20-20E	21.00	
51	21.00	48-11-23	25.00	N 60-20-20E	21.00	
52	21.00	48-11-23	25.00	N 60-20-20E	21.00	
53	21.00	48-11-23	25.00	N 60-20-20E	21.00	
54	21.00	48-11-23	25.00	N 60-20-20E	21.00	
55	21.00	48-11-23	25.00	N 60-20-20E	21.00	
56	21.00	48-11-23	25.00	N 60-20-20E	21.00	
57	21.00	48-11-23	25.00	N 60-20-20E	21.00	
58	21.00	48-11-23	25.00	N 60-20-20E	21.00	
59	21.00	48-11-23	25.00	N 60-20-20E	21.00	
60	21.00	48-11-23	25.00	N 60-20-20E	21.00	
61	21.00	48-11-23	25.00	N 60-20-20E	21.00	
62	21.00	48-11-23	25.00	N 60-20-20E	21.00	
63	21.00	48-11-23	25.00	N 60-20-20E	21.00	
64	21.00	48-11-23	25.00	N 60-20-20E	21.00	
65	21.00	48-11-23	25.00	N 60-20-20E	21.00	
66	21.00	48-11-23	25.00	N 60-20-20E	21.00	
67	21.00	48-11-23	25.00	N 60-20-20E	21.00	
68	21.00	48-11-23	25.00	N 60-20-20E	21.00	
69	21.00	48-11-23	25.00	N 60-20-20E	21.00	
70	21.00	48-11-23	25.00	N 60-20-20E	21.00	
71	21.00	48-11-23	25.00	N 60-20-20E	21.00	
72	21.00	48-11-23	25.00	N 60-20-20E	21.00	
73	21.00	48-11-23	25.00	N 60-20-20E	21.00	
74	21.00	48-11-23	25.00	N 60-20-20E	21.00	
75	21.00	48-11-23	25.00	N 60-20-20E	21.00	
76	21.00	48-11-23	25.00	N 60-20-20E	21.00	
77	21.00	48-11-23	25.00	N 60-20-20E	21.00	
78	21.00	48-11-23	25.00	N 60-20-20E	21.00	
79	21.00	48-11-23	25.00	N 60-20-20E	21.00	
80	21.00	48-11-23	25.00	N 60-20-20E	21.00	
81	21.00	48-11-23	25.00	N 60-20-20E	21.00	
82	21.00	48-11-23	25.00	N 60-20-20E	21.00	
83	21.00	48-11-23	25.00	N 60-20-20E	21.00	
84	21.00	48-11-23	25.00	N 60-20-20E	21.00	
85	21.00	48-11-23	25.00	N 60-20-20E	21.00	
86	21.00	48-11-23	25.00	N 60-20-20E	21.00	
87	21.00	48-11-23	25.00	N 60-20-20E	21.00	
88	21.00	48-11-23	25.00	N 60-20-20E	21.00	
89	21.00	48-11-23	25.00	N 60-20-20E	21.00	
90	21.00	48-11-23	25.00	N 60-20-20E	21.00	
91	21.00	48-11-23	25.00	N 60-20-20E	21.00	
92	21.00	48-11-23	25.00	N 60-20-20E	21.00	

CINCO RANCH SOUTHWEST SEC. 66
BEING A SUBDIVISION OF 18.88 ACRES IN THE JOHN RICH SURVEY A-706 AND W.M. ANDRUS SURVEY A-752 FORT BEND COUNTY, TEXAS

70 LOTS 5 RESERVES 4 BLOCKS
SCALE: 1"=100' MARCH, 2012
OWNERS:
TERRABROOK CINCO RANCH SOUTHWEST, L.P.
A DELAWARE LIMITED PARTNERSHIP
BY: TERRABROOK CINCO RANCH SOUTHWEST GP, L.L.C.
A DELAWARE LIMITED LIABILITY COMPANY,
ITS GENERAL PARTNER

12325 WEST LITTLE YORK, SUITE 300 HOUSTON, TEXAS 77040 (713) 973-8000
AECOM TECHNICAL SERVICES, INC.
5757 WOODWAY, SUITE 101 WEST HOUSTON, TEXAS 77057-1599
WWW.AECOM.COM
JOB NO. 60225259
SHEET 2 OF 2