

PLAT RECORDING SHEET

PLAT NAME: LaCenterra Central

PLAT NO: _____

ACREAGE: 4.851 Acres

LEAGUE: Thomas Hobermaker Survey

ABSTRACT NUMBER: 190

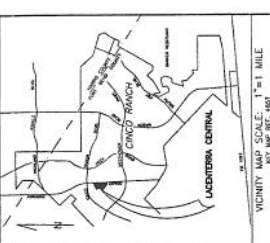
NUMBER OF BLOCKS: 1

NUMBER OF LOTS: 0

NUMBER OF RESERVES: 1

OWNERS: LaCenterra at Cinco Ranch II, L.P. and LaCenterra at Cinco Ranch, LLC

(DEPUTY CLERK)



VICINITY MAP SCALE: 1" = 1 MILE
 UNITS: FEET AND DECIMALS THEREOF

1. THE RESTRICTED REPLAT...
 2. THE RESTRICTED REPLAT...
 3. THE RESTRICTED REPLAT...
 4. THE RESTRICTED REPLAT...
 5. THE RESTRICTED REPLAT...
 6. THE RESTRICTED REPLAT...
 7. THE RESTRICTED REPLAT...
 8. THE RESTRICTED REPLAT...
 9. THE RESTRICTED REPLAT...
 10. THE RESTRICTED REPLAT...
 11. THE RESTRICTED REPLAT...
 12. THE RESTRICTED REPLAT...
 13. THE RESTRICTED REPLAT...
 14. THE RESTRICTED REPLAT...
 15. THE RESTRICTED REPLAT...
 16. THE RESTRICTED REPLAT...
 17. THE RESTRICTED REPLAT...
 18. THE RESTRICTED REPLAT...
 19. THE RESTRICTED REPLAT...
 20. THE RESTRICTED REPLAT...
 21. THE RESTRICTED REPLAT...
 22. THE RESTRICTED REPLAT...
 23. THE RESTRICTED REPLAT...
 24. THE RESTRICTED REPLAT...
 25. THE RESTRICTED REPLAT...
 26. THE RESTRICTED REPLAT...
 27. THE RESTRICTED REPLAT...
 28. THE RESTRICTED REPLAT...
 29. THE RESTRICTED REPLAT...
 30. THE RESTRICTED REPLAT...
 31. THE RESTRICTED REPLAT...
 32. THE RESTRICTED REPLAT...
 33. THE RESTRICTED REPLAT...
 34. THE RESTRICTED REPLAT...
 35. THE RESTRICTED REPLAT...
 36. THE RESTRICTED REPLAT...
 37. THE RESTRICTED REPLAT...
 38. THE RESTRICTED REPLAT...
 39. THE RESTRICTED REPLAT...
 40. THE RESTRICTED REPLAT...
 41. THE RESTRICTED REPLAT...
 42. THE RESTRICTED REPLAT...
 43. THE RESTRICTED REPLAT...
 44. THE RESTRICTED REPLAT...
 45. THE RESTRICTED REPLAT...
 46. THE RESTRICTED REPLAT...
 47. THE RESTRICTED REPLAT...
 48. THE RESTRICTED REPLAT...
 49. THE RESTRICTED REPLAT...
 50. THE RESTRICTED REPLAT...

LaCenteria Central
 SUBDIVISION

A SUBDIVISION OF 4.851 ACRES BEING A PARTIAL REPLAT OF RESTRICTED RESERVE "A" OF CINCO VILLAGE CENTER SEC 2 PARTIAL REPLAT NO. 1 AS RECORDED IN CENTER SEC 2 PARTIAL REPLAT NO. 1 AS RECORDED IN RECORDS, IN THE THOMAS HOBERMAYER SURVEY, ABSTRACT NO. 190, FORT BEND COUNTY, TEXAS

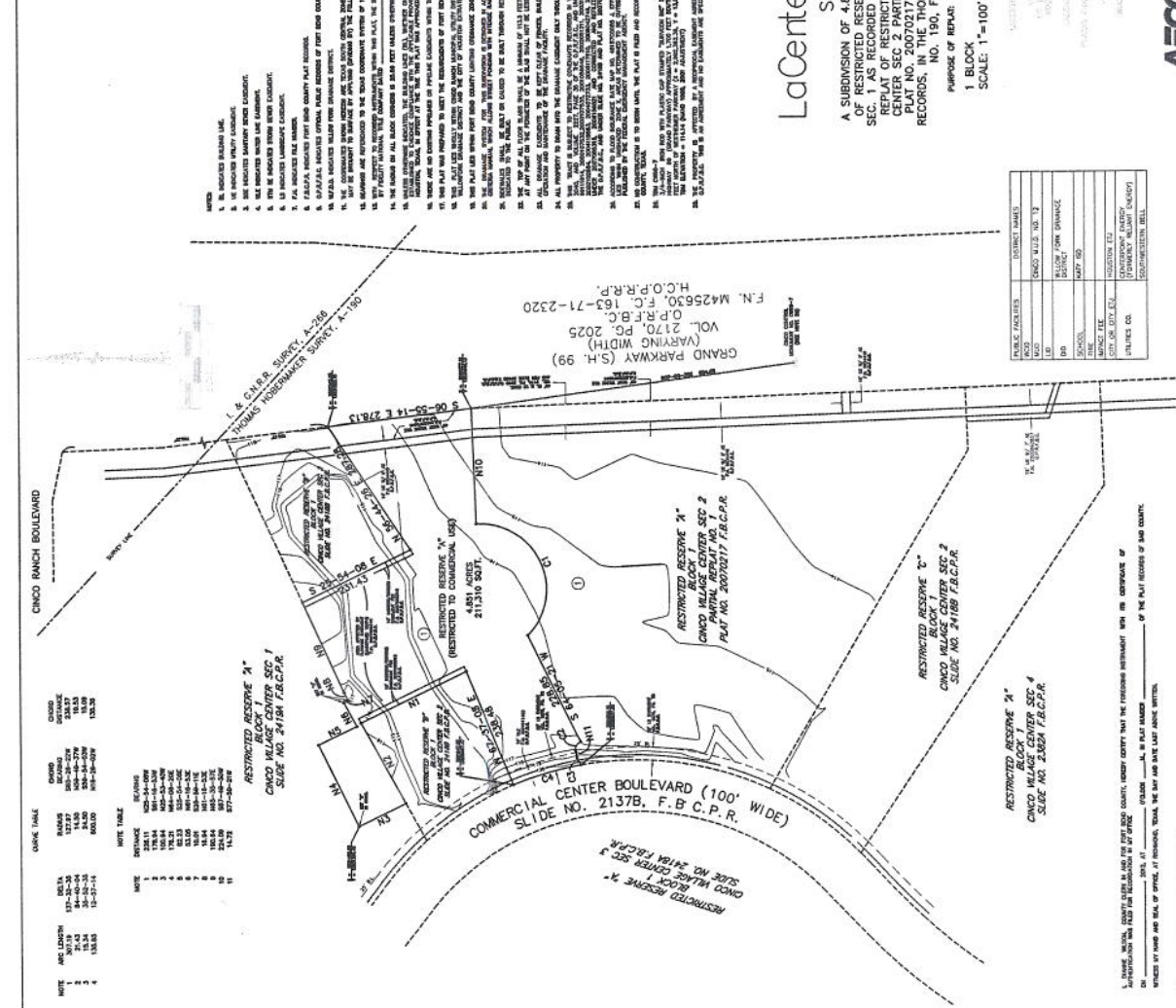
PURPOSE OF REPLAT: TO CREATE A SINGLE COMMERCIAL RESERVE

1 BLOCK
 1 RESERVE
 SCALE: 1" = 100'

FEBRUARY, 2012

AECOM

1110 DALLAS STREET, SUITE 1000
 HOUSTON, TEXAS 77036
 PHONE: 713-766-4123



DATE TIME

DATE	TIME	DESCRIPTION
11/13/12	07:00-08:00	11
11/13/12	08:00-09:00	10
11/13/12	09:00-10:00	9
11/13/12	10:00-11:00	8
11/13/12	11:00-12:00	7
11/13/12	12:00-01:00	6
11/13/12	01:00-02:00	5
11/13/12	02:00-03:00	4
11/13/12	03:00-04:00	3
11/13/12	04:00-05:00	2
11/13/12	05:00-06:00	1

RESTRICTED RESERVE "A"
 CINCO VILLAGE CENTER SEC 1
 SLIDE NO. 2418A F.B.C.P.R.

RESTRICTED RESERVE "B"
 CINCO VILLAGE CENTER SEC 2
 PARTIAL REPLAT NO. 1

RESTRICTED RESERVE "C"
 CINCO VILLAGE CENTER SEC 2
 SLIDE NO. 2418B F.B.C.P.R.

RESTRICTED RESERVE "D"
 CINCO VILLAGE CENTER SEC 4
 SLIDE NO. 2487A F.B.C.P.R.

RESTRICTED RESERVE "E"
 CINCO VILLAGE CENTER SEC 2
 SLIDE NO. 2418C F.B.C.P.R.

RESTRICTED RESERVE "F"
 CINCO VILLAGE CENTER SEC 2
 SLIDE NO. 2418D F.B.C.P.R.

RESTRICTED RESERVE "G"
 CINCO VILLAGE CENTER SEC 2
 SLIDE NO. 2418E F.B.C.P.R.

RESTRICTED RESERVE "H"
 CINCO VILLAGE CENTER SEC 2
 SLIDE NO. 2418F F.B.C.P.R.

RESTRICTED RESERVE "I"
 CINCO VILLAGE CENTER SEC 2
 SLIDE NO. 2418G F.B.C.P.R.

RESTRICTED RESERVE "J"
 CINCO VILLAGE CENTER SEC 2
 SLIDE NO. 2418H F.B.C.P.R.

RESTRICTED RESERVE "K"
 CINCO VILLAGE CENTER SEC 2
 SLIDE NO. 2418I F.B.C.P.R.

RESTRICTED RESERVE "L"
 CINCO VILLAGE CENTER SEC 2
 SLIDE NO. 2418J F.B.C.P.R.

RESTRICTED RESERVE "M"
 CINCO VILLAGE CENTER SEC 2
 SLIDE NO. 2418K F.B.C.P.R.

RESTRICTED RESERVE "N"
 CINCO VILLAGE CENTER SEC 2
 SLIDE NO. 2418L F.B.C.P.R.

RESTRICTED RESERVE "O"
 CINCO VILLAGE CENTER SEC 2
 SLIDE NO. 2418M F.B.C.P.R.

RESTRICTED RESERVE "P"
 CINCO VILLAGE CENTER SEC 2
 SLIDE NO. 2418N F.B.C.P.R.

RESTRICTED RESERVE "Q"
 CINCO VILLAGE CENTER SEC 2
 SLIDE NO. 2418O F.B.C.P.R.

RESTRICTED RESERVE "R"
 CINCO VILLAGE CENTER SEC 2
 SLIDE NO. 2418P F.B.C.P.R.

RESTRICTED RESERVE "S"
 CINCO VILLAGE CENTER SEC 2
 SLIDE NO. 2418Q F.B.C.P.R.

RESTRICTED RESERVE "T"
 CINCO VILLAGE CENTER SEC 2
 SLIDE NO. 2418R F.B.C.P.R.

RESTRICTED RESERVE "U"
 CINCO VILLAGE CENTER SEC 2
 SLIDE NO. 2418S F.B.C.P.R.

RESTRICTED RESERVE "V"
 CINCO VILLAGE CENTER SEC 2
 SLIDE NO. 2418T F.B.C.P.R.

RESTRICTED RESERVE "W"
 CINCO VILLAGE CENTER SEC 2
 SLIDE NO. 2418U F.B.C.P.R.

RESTRICTED RESERVE "X"
 CINCO VILLAGE CENTER SEC 2
 SLIDE NO. 2418V F.B.C.P.R.

RESTRICTED RESERVE "Y"
 CINCO VILLAGE CENTER SEC 2
 SLIDE NO. 2418W F.B.C.P.R.

RESTRICTED RESERVE "Z"
 CINCO VILLAGE CENTER SEC 2
 SLIDE NO. 2418X F.B.C.P.R.

COMMERCIAL CENTER BOULEVARD (100' WIDE)
 SLIDE NO. 2137B, F.B.C.P.R.

GRAND PARKWAY (SH. 99)
 (W/RIGHT-OF-WAY) VOL. 2170, PG. 2025
 O.P.R.F.B.C. H.O.P.R.R.P. F.N. M425630,
 F.C. 163-71-2320

RESTRICTED RESERVE "A"
 CINCO VILLAGE CENTER SEC 1
 SLIDE NO. 2418A F.B.C.P.R.

RESTRICTED RESERVE "B"
 CINCO VILLAGE CENTER SEC 2
 PARTIAL REPLAT NO. 1

RESTRICTED RESERVE "C"
 CINCO VILLAGE CENTER SEC 2
 SLIDE NO. 2418B F.B.C.P.R.

RESTRICTED RESERVE "D"
 CINCO VILLAGE CENTER SEC 4
 SLIDE NO. 2487A F.B.C.P.R.

RESTRICTED RESERVE "E"
 CINCO VILLAGE CENTER SEC 2
 SLIDE NO. 2418C F.B.C.P.R.

RESTRICTED RESERVE "F"
 CINCO VILLAGE CENTER SEC 2
 SLIDE NO. 2418D F.B.C.P.R.

RESTRICTED RESERVE "G"
 CINCO VILLAGE CENTER SEC 2
 SLIDE NO. 2418E F.B.C.P.R.

RESTRICTED RESERVE "H"
 CINCO VILLAGE CENTER SEC 2
 SLIDE NO. 2418F F.B.C.P.R.

RESTRICTED RESERVE "I"
 CINCO VILLAGE CENTER SEC 2
 SLIDE NO. 2418G F.B.C.P.R.

RESTRICTED RESERVE "J"
 CINCO VILLAGE CENTER SEC 2
 SLIDE NO. 2418H F.B.C.P.R.

RESTRICTED RESERVE "K"
 CINCO VILLAGE CENTER SEC 2
 SLIDE NO. 2418I F.B.C.P.R.

RESTRICTED RESERVE "L"
 CINCO VILLAGE CENTER SEC 2
 SLIDE NO. 2418J F.B.C.P.R.

RESTRICTED RESERVE "M"
 CINCO VILLAGE CENTER SEC 2
 SLIDE NO. 2418K F.B.C.P.R.

RESTRICTED RESERVE "N"
 CINCO VILLAGE CENTER SEC 2
 SLIDE NO. 2418L F.B.C.P.R.

RESTRICTED RESERVE "O"
 CINCO VILLAGE CENTER SEC 2
 SLIDE NO. 2418M F.B.C.P.R.

RESTRICTED RESERVE "P"
 CINCO VILLAGE CENTER SEC 2
 SLIDE NO. 2418N F.B.C.P.R.

RESTRICTED RESERVE "Q"
 CINCO VILLAGE CENTER SEC 2
 SLIDE NO. 2418O F.B.C.P.R.

RESTRICTED RESERVE "R"
 CINCO VILLAGE CENTER SEC 2
 SLIDE NO. 2418P F.B.C.P.R.

RESTRICTED RESERVE "S"
 CINCO VILLAGE CENTER SEC 2
 SLIDE NO. 2418Q F.B.C.P.R.

RESTRICTED RESERVE "T"
 CINCO VILLAGE CENTER SEC 2
 SLIDE NO. 2418R F.B.C.P.R.

RESTRICTED RESERVE "U"
 CINCO VILLAGE CENTER SEC 2
 SLIDE NO. 2418S F.B.C.P.R.

RESTRICTED RESERVE "V"
 CINCO VILLAGE CENTER SEC 2
 SLIDE NO. 2418T F.B.C.P.R.

RESTRICTED RESERVE "W"
 CINCO VILLAGE CENTER SEC 2
 SLIDE NO. 2418U F.B.C.P.R.

RESTRICTED RESERVE "X"
 CINCO VILLAGE CENTER SEC 2
 SLIDE NO. 2418V F.B.C.P.R.

RESTRICTED RESERVE "Y"
 CINCO VILLAGE CENTER SEC 2
 SLIDE NO. 2418W F.B.C.P.R.

RESTRICTED RESERVE "Z"
 CINCO VILLAGE CENTER SEC 2
 SLIDE NO. 2418X F.B.C.P.R.