

# PLAT RECORDING SHEET

PLAT NAME: University Boulevard and LJ Parkway at Riverstone Phase 2 St. Ded.

PLAT NO: \_\_\_\_\_

ACREAGE: 8.1872

LEAGUE: William Little Survey

ABSTRACT NUMBER: 54

NUMBER OF BLOCKS: 0

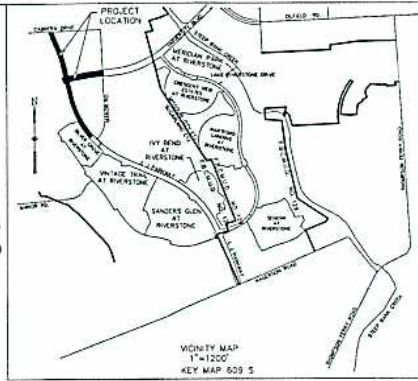
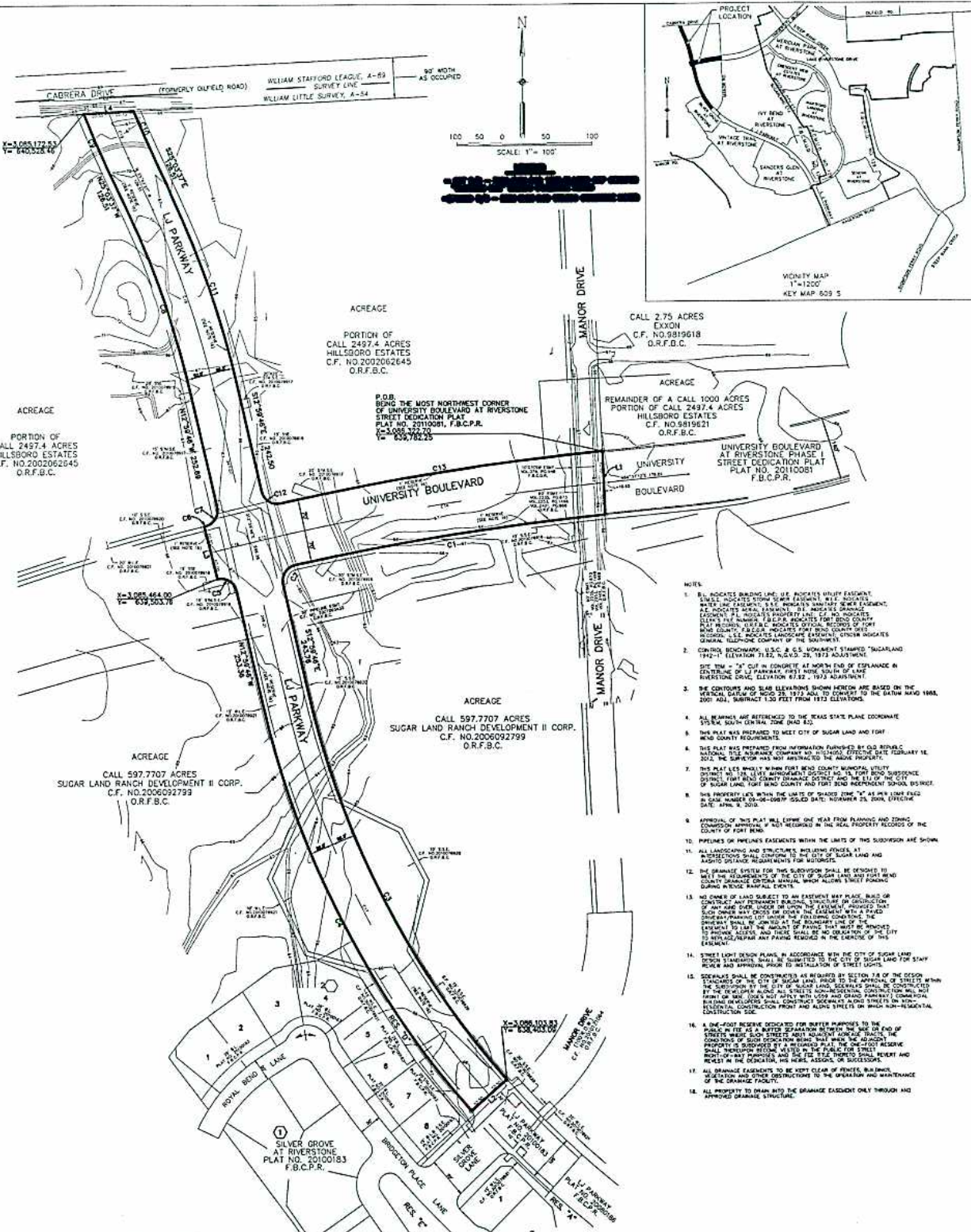
NUMBER OF LOTS: 0

NUMBER OF RESERVES: 0

OWNERS: Sugar Land Ranch Development II Corp. and Hillboro Estates L.L.C.

\_\_\_\_\_  
(DEPUTY CLERK)





NUMBER	DIRECTION	DISTANCE
L1	S02°25'43"E	140.20
L2	S48°25'45"W	105.00
L3	N02°08'41"W	120.00
L4	N87°24'44"E	111.27

NUMERIC	LENGTH	BEARING	NUMERIC	LENGTH	BEARING
01	899.18	S4°45'01"	08	100.00	S00°00'00"
02	899.23	S4°45'01"	09	100.00	S00°00'00"
03	899.28	S4°45'01"	10	100.00	S00°00'00"
04	899.33	S4°45'01"	11	100.00	S00°00'00"
05	899.38	S4°45'01"	12	100.00	S00°00'00"
06	899.43	S4°45'01"	13	100.00	S00°00'00"
07	899.48	S4°45'01"	14	100.00	S00°00'00"
08	899.53	S4°45'01"	15	100.00	S00°00'00"
09	899.58	S4°45'01"	16	100.00	S00°00'00"
10	899.63	S4°45'01"	17	100.00	S00°00'00"
11	899.68	S4°45'01"	18	100.00	S00°00'00"
12	899.73	S4°45'01"	19	100.00	S00°00'00"
13	899.78	S4°45'01"	20	100.00	S00°00'00"
14	899.83	S4°45'01"	21	100.00	S00°00'00"
15	899.88	S4°45'01"	22	100.00	S00°00'00"
16	899.93	S4°45'01"	23	100.00	S00°00'00"
17	899.98	S4°45'01"	24	100.00	S00°00'00"
18	900.03	S4°45'01"	25	100.00	S00°00'00"
19	900.08	S4°45'01"	26	100.00	S00°00'00"
20	900.13	S4°45'01"	27	100.00	S00°00'00"
21	900.18	S4°45'01"	28	100.00	S00°00'00"
22	900.23	S4°45'01"	29	100.00	S00°00'00"
23	900.28	S4°45'01"	30	100.00	S00°00'00"
24	900.33	S4°45'01"	31	100.00	S00°00'00"
25	900.38	S4°45'01"	32	100.00	S00°00'00"
26	900.43	S4°45'01"	33	100.00	S00°00'00"
27	900.48	S4°45'01"	34	100.00	S00°00'00"
28	900.53	S4°45'01"	35	100.00	S00°00'00"
29	900.58	S4°45'01"	36	100.00	S00°00'00"
30	900.63	S4°45'01"	37	100.00	S00°00'00"
31	900.68	S4°45'01"	38	100.00	S00°00'00"
32	900.73	S4°45'01"	39	100.00	S00°00'00"
33	900.78	S4°45'01"	40	100.00	S00°00'00"
34	900.83	S4°45'01"	41	100.00	S00°00'00"
35	900.88	S4°45'01"	42	100.00	S00°00'00"
36	900.93	S4°45'01"	43	100.00	S00°00'00"
37	900.98	S4°45'01"	44	100.00	S00°00'00"
38	901.03	S4°45'01"	45	100.00	S00°00'00"
39	901.08	S4°45'01"	46	100.00	S00°00'00"
40	901.13	S4°45'01"	47	100.00	S00°00'00"
41	901.18	S4°45'01"	48	100.00	S00°00'00"
42	901.23	S4°45'01"	49	100.00	S00°00'00"
43	901.28	S4°45'01"	50	100.00	S00°00'00"
44	901.33	S4°45'01"	51	100.00	S00°00'00"
45	901.38	S4°45'01"	52	100.00	S00°00'00"
46	901.43	S4°45'01"	53	100.00	S00°00'00"
47	901.48	S4°45'01"	54	100.00	S00°00'00"
48	901.53	S4°45'01"	55	100.00	S00°00'00"
49	901.58	S4°45'01"	56	100.00	S00°00'00"
50	901.63	S4°45'01"	57	100.00	S00°00'00"
51	901.68	S4°45'01"	58	100.00	S00°00'00"
52	901.73	S4°45'01"	59	100.00	S00°00'00"
53	901.78	S4°45'01"	60	100.00	S00°00'00"
54	901.83	S4°45'01"	61	100.00	S00°00'00"
55	901.88	S4°45'01"	62	100.00	S00°00'00"
56	901.93	S4°45'01"	63	100.00	S00°00'00"
57	901.98	S4°45'01"	64	100.00	S00°00'00"
58	902.03	S4°45'01"	65	100.00	S00°00'00"
59	902.08	S4°45'01"	66	100.00	S00°00'00"
60	902.13	S4°45'01"	67	100.00	S00°00'00"
61	902.18	S4°45'01"	68	100.00	S00°00'00"
62	902.23	S4°45'01"	69	100.00	S00°00'00"
63	902.28	S4°45'01"	70	100.00	S00°00'00"
64	902.33	S4°45'01"	71	100.00	S00°00'00"
65	902.38	S4°45'01"	72	100.00	S00°00'00"
66	902.43	S4°45'01"	73	100.00	S00°00'00"
67	902.48	S4°45'01"	74	100.00	S00°00'00"
68	902.53	S4°45'01"	75	100.00	S00°00'00"
69	902.58	S4°45'01"	76	100.00	S00°00'00"
70	902.63	S4°45'01"	77	100.00	S00°00'00"
71	902.68	S4°45'01"	78	100.00	S00°00'00"
72	902.73	S4°45'01"	79	100.00	S00°00'00"
73	902.78	S4°45'01"	80	100.00	S00°00'00"
74	902.83	S4°45'01"	81	100.00	S00°00'00"
75	902.88	S4°45'01"	82	100.00	S00°00'00"
76	902.93	S4°45'01"	83	100.00	S00°00'00"
77	902.98	S4°45'01"	84	100.00	S00°00'00"
78	903.03	S4°45'01"	85	100.00	S00°00'00"
79	903.08	S4°45'01"	86	100.00	S00°00'00"
80	903.13	S4°45'01"	87	100.00	S00°00'00"
81	903.18	S4°45'01"	88	100.00	S00°00'00"
82	903.23	S4°45'01"	89	100.00	S00°00'00"
83	903.28	S4°45'01"	90	100.00	S00°00'00"
84	903.33	S4°45'01"	91	100.00	S00°00'00"
85	903.38	S4°45'01"	92	100.00	S00°00'00"
86	903.43	S4°45'01"	93	100.00	S00°00'00"
87	903.48	S4°45'01"	94	100.00	S00°00'00"
88	903.53	S4°45'01"	95	100.00	S00°00'00"
89	903.58	S4°45'01"	96	100.00	S00°00'00"
90	903.63	S4°45'01"	97	100.00	S00°00'00"
91	903.68	S4°45'01"	98	100.00	S00°00'00"
92	903.73	S4°45'01"	99	100.00	S00°00'00"
93	903.78	S4°45'01"	100	100.00	S00°00'00"

# UNIVERSITY BOULEVARD AND LJ PARKWAY AT RIVERSTONE PHASE 2 STREET DEDICATION PLAT

BEING 8.1872 ACRES  
LOCATED IN THE  
WILLIAM LITTLE SURVEY, A-54,  
FORT BEND COUNTY, TEXAS

SCALE: 1"=100' DATE: JANUARY, 2012



OWNERS:  
SUGAR LAND RANCH DEVELOPMENT II CORP.

OWNERS:  
HILLSBORO ESTATES L.L.C.

LARRY D. JOHNSON, MANAGER  
TOM P. WOOD, VICE-PRESIDENT  
5009 WHEATWAY, SUITE 110  
HOUSTON, TEXAS 77056

LARRY D. JOHNSON, MANAGER  
TOM P. WOOD, VICE-PRESIDENT  
5009 WHEATWAY, SUITE 110  
HOUSTON, TEXAS 77056

Engineering and Surveying  
8000 Richmond Avenue, Suite 450  
North Houston  
Houston, Texas 77062  
713.765.7700 (713) 765-3000, Fax  
TEXAS PE BOARD #940  
REGISTRATION NO. 3610