

PLAT RECORDING SHEET

PLAT NAME: Perez Automotive

PLAT NO: _____

ACREAGE: 1.0012

LEAGUE: Section 69 H. & T.C.R.R. Co. Survey

ABSTRACT NUMBER: 239

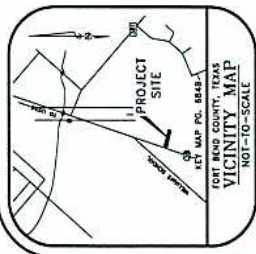
NUMBER OF BLOCKS: 1

NUMBER OF LOTS: 0

NUMBER OF RESERVES: 1

OWNERS: Dionicio Perez, Jr. & Leticia Perez

(DEPUTY CLERK)



I, John H. Perez, Jr., County Clerk of Fort Bend County, Texas, do hereby certify that the foregoing instrument with its exhibits as submitted was filed for record in my office on 05/25/2011, at 10:15 a.m., and duly received in 10:15 a.m. of the day thereof by Fort Bend County, Texas.

Witness my hand and seal of office, at Richmond, Texas, the day and date first hereunto written.

 John H. Perez, Jr.
 County Clerk of Fort Bend County, Texas

APPROVED by the Commissioners' Court of Fort Bend County, Texas, this 25th day of 05/25/2011.

 Commissioner, Precinct 1

 Commissioner, Precinct 2

 Commissioner, Precinct 3

 Commissioner, Precinct 4

 Commissioner, Precinct 5

 Commissioner, Precinct 6

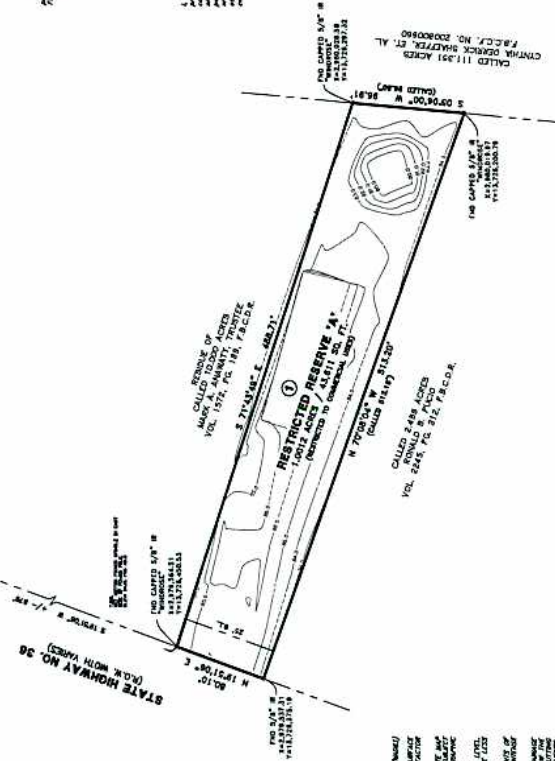
 Commissioner, Precinct 7

 Commissioner, Precinct 8

 Commissioner, Precinct 9

 Commissioner, Precinct 10

H & T.C. R.R. CO. SURVEY ABSTRACT NO. 239



- GENERAL NOTES**
- BEARING AND DISTANCE ON THE BOUNDARY OF THE RESTRICTED RESERVE SHALL BE AS SHOWN ON THIS PLAN.
 - ALL CORNER MARKERS SHALL BE SET BY THE SURVEYOR AND SHALL BE IN ACCORDANCE WITH THE FOLLOWING SCALE FACTOR: 1/4" = 100 FEET.
 - ALL CORNER MARKERS SHALL BE SET BY THE SURVEYOR AND SHALL BE IN ACCORDANCE WITH THE FOLLOWING SCALE FACTOR: 1/4" = 100 FEET.
 - ALL CORNER MARKERS SHALL BE SET BY THE SURVEYOR AND SHALL BE IN ACCORDANCE WITH THE FOLLOWING SCALE FACTOR: 1/4" = 100 FEET.
 - ALL CORNER MARKERS SHALL BE SET BY THE SURVEYOR AND SHALL BE IN ACCORDANCE WITH THE FOLLOWING SCALE FACTOR: 1/4" = 100 FEET.
 - ALL CORNER MARKERS SHALL BE SET BY THE SURVEYOR AND SHALL BE IN ACCORDANCE WITH THE FOLLOWING SCALE FACTOR: 1/4" = 100 FEET.
 - ALL CORNER MARKERS SHALL BE SET BY THE SURVEYOR AND SHALL BE IN ACCORDANCE WITH THE FOLLOWING SCALE FACTOR: 1/4" = 100 FEET.
 - ALL CORNER MARKERS SHALL BE SET BY THE SURVEYOR AND SHALL BE IN ACCORDANCE WITH THE FOLLOWING SCALE FACTOR: 1/4" = 100 FEET.
 - ALL CORNER MARKERS SHALL BE SET BY THE SURVEYOR AND SHALL BE IN ACCORDANCE WITH THE FOLLOWING SCALE FACTOR: 1/4" = 100 FEET.
 - ALL CORNER MARKERS SHALL BE SET BY THE SURVEYOR AND SHALL BE IN ACCORDANCE WITH THE FOLLOWING SCALE FACTOR: 1/4" = 100 FEET.
 - ALL CORNER MARKERS SHALL BE SET BY THE SURVEYOR AND SHALL BE IN ACCORDANCE WITH THE FOLLOWING SCALE FACTOR: 1/4" = 100 FEET.
 - ALL CORNER MARKERS SHALL BE SET BY THE SURVEYOR AND SHALL BE IN ACCORDANCE WITH THE FOLLOWING SCALE FACTOR: 1/4" = 100 FEET.
 - ALL CORNER MARKERS SHALL BE SET BY THE SURVEYOR AND SHALL BE IN ACCORDANCE WITH THE FOLLOWING SCALE FACTOR: 1/4" = 100 FEET.
 - ALL CORNER MARKERS SHALL BE SET BY THE SURVEYOR AND SHALL BE IN ACCORDANCE WITH THE FOLLOWING SCALE FACTOR: 1/4" = 100 FEET.
 - ALL CORNER MARKERS SHALL BE SET BY THE SURVEYOR AND SHALL BE IN ACCORDANCE WITH THE FOLLOWING SCALE FACTOR: 1/4" = 100 FEET.

STATE OF TEXAS
COUNTY OF FORT BEND

Know all men that I, John H. Perez, Jr., County Clerk of Fort Bend County, Texas, do hereby certify that the foregoing instrument with its exhibits as submitted was filed for record in my office on 05/25/2011, at 10:15 a.m., and duly received in 10:15 a.m. of the day thereof by Fort Bend County, Texas.

Witness my hand and seal of office, at Richmond, Texas, the day and date first hereunto written.

 John H. Perez, Jr.
 County Clerk of Fort Bend County, Texas

WITNESSES OUR HANDS, in the City of Richmond, Texas, this 25th day of 05/25/2011.

 Donald C. Bradford
 Surveyor

 Donald C. Bradford
 Professional Surveying and Mapping
 Phone: (817) 235-4252, Fax: (817) 793-2250
 1818 West Orange St.
 Fort Worth, Texas 76102

PLATTING CONSULTANT
PLATT TRACK, INC.
 Professional Platting Consultants
 Phone: (817) 642-4617
 1818 West Orange St.
 Fort Worth, Texas 76102

PEREZ AUTOMOTIVE
 A SUBDIVISION OF 1.0012 AC. OR 43,611 SQ. FT.
 SITUATED IN SECTION NO. 69
 H. & T.C.R.R. CO. SURVEY, ABSTRACT NO. 239
 FORT BEND COUNTY, TEXAS
 JOHN AUSTIN SURVEY, ABSTRACT NO. 1

SCALE 1" = 50'

1 BLOCK 1 RESERVE

FEBRUARY 2011

DISTRICT	NAME
SCHOOL	WYATT CO. JR.
SCHOOL	FRC 171C
SCHOOL	FRC 200L
SCHOOL	NEPHEW ISD
IMPACT FEE AREA	FB RURAL NO 1
CITY OR CITY ETV	NONE
UTILITIES CO.	CENTROPOINT

