

**PLAT RECORDING SHEET**

**PLAT NAME:** Sienna Village of Anderson Springs, Section 18B

**PLAT NO:** \_\_\_\_\_

**ACREAGE:** 3.489

**LEAGUE:** Moses Shipman League

**ABSTRACT NUMBER:** 86

**NUMBER OF BLOCKS:** 1

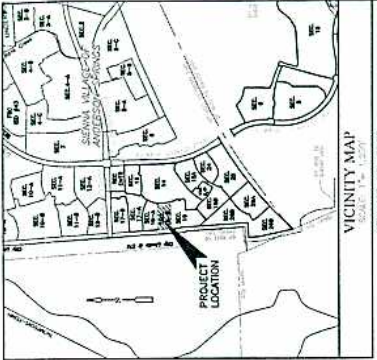
**NUMBER OF LOTS:** 15

**NUMBER OF RESERVES:** 1

**OWNERS:** Sienna/Johnson North, L.P.

\_\_\_\_\_  
**(DEPUTY CLERK)**



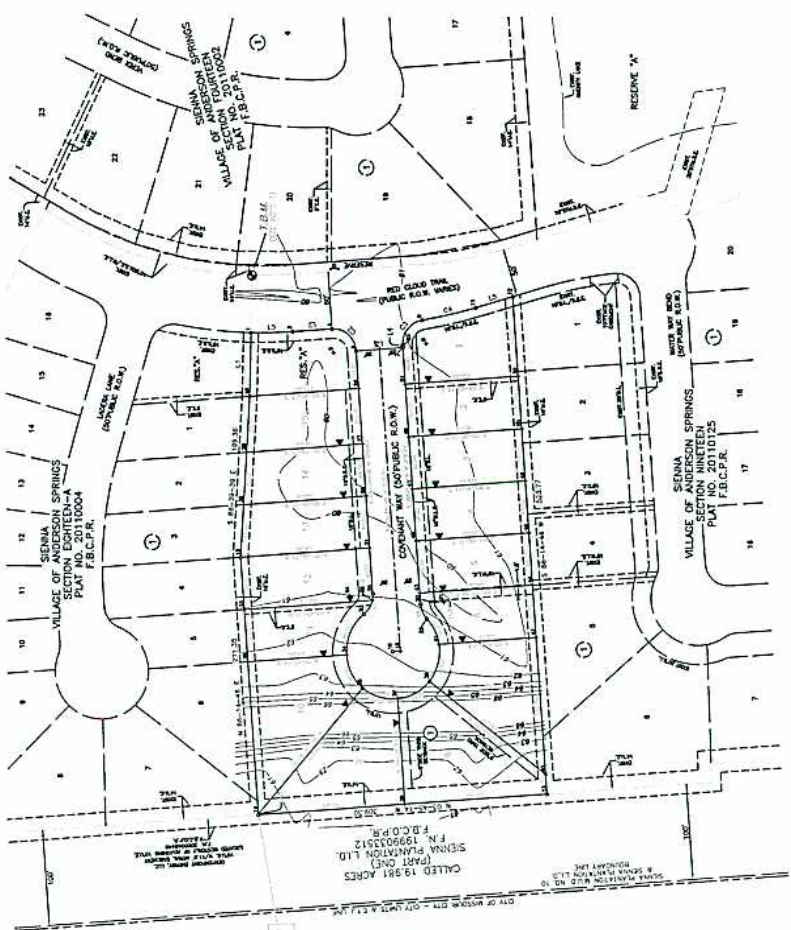


USE TABLE

LINE	SECTION	REFERENCE
1	1	1
2	2	2
3	3	3
4	4	4
5	5	5
6	6	6
7	7	7
8	8	8
9	9	9
10	10	10
11	11	11
12	12	12
13	13	13
14	14	14
15	15	15
16	16	16
17	17	17
18	18	18
19	19	19
20	20	20
21	21	21
22	22	22
23	23	23
24	24	24
25	25	25
26	26	26
27	27	27
28	28	28
29	29	29
30	30	30
31	31	31
32	32	32
33	33	33
34	34	34
35	35	35
36	36	36
37	37	37
38	38	38
39	39	39
40	40	40
41	41	41
42	42	42
43	43	43
44	44	44
45	45	45
46	46	46
47	47	47
48	48	48
49	49	49
50	50	50
51	51	51
52	52	52
53	53	53
54	54	54
55	55	55
56	56	56
57	57	57
58	58	58
59	59	59
60	60	60

CURVE TABLE

CURVE	NAME	LENGTH	ANGLE	PI	DELTA	CHORD BEARING
1	1	111.11	90.00	1.5708	111.11	111.11 S 0.00 E
2	2	111.11	90.00	1.5708	111.11	111.11 S 90.00 W
3	3	111.11	90.00	1.5708	111.11	111.11 N 90.00 W
4	4	111.11	90.00	1.5708	111.11	111.11 N 0.00 E
5	5	111.11	90.00	1.5708	111.11	111.11 S 0.00 E
6	6	111.11	90.00	1.5708	111.11	111.11 S 90.00 W
7	7	111.11	90.00	1.5708	111.11	111.11 N 90.00 W
8	8	111.11	90.00	1.5708	111.11	111.11 N 0.00 E
9	9	111.11	90.00	1.5708	111.11	111.11 S 0.00 E
10	10	111.11	90.00	1.5708	111.11	111.11 S 90.00 W
11	11	111.11	90.00	1.5708	111.11	111.11 N 90.00 W
12	12	111.11	90.00	1.5708	111.11	111.11 N 0.00 E
13	13	111.11	90.00	1.5708	111.11	111.11 S 0.00 E
14	14	111.11	90.00	1.5708	111.11	111.11 S 90.00 W
15	15	111.11	90.00	1.5708	111.11	111.11 N 90.00 W
16	16	111.11	90.00	1.5708	111.11	111.11 N 0.00 E
17	17	111.11	90.00	1.5708	111.11	111.11 S 0.00 E
18	18	111.11	90.00	1.5708	111.11	111.11 S 90.00 W
19	19	111.11	90.00	1.5708	111.11	111.11 N 90.00 W
20	20	111.11	90.00	1.5708	111.11	111.11 N 0.00 E
21	21	111.11	90.00	1.5708	111.11	111.11 S 0.00 E
22	22	111.11	90.00	1.5708	111.11	111.11 S 90.00 W
23	23	111.11	90.00	1.5708	111.11	111.11 N 90.00 W
24	24	111.11	90.00	1.5708	111.11	111.11 N 0.00 E
25	25	111.11	90.00	1.5708	111.11	111.11 S 0.00 E
26	26	111.11	90.00	1.5708	111.11	111.11 S 90.00 W
27	27	111.11	90.00	1.5708	111.11	111.11 N 90.00 W
28	28	111.11	90.00	1.5708	111.11	111.11 N 0.00 E
29	29	111.11	90.00	1.5708	111.11	111.11 S 0.00 E
30	30	111.11	90.00	1.5708	111.11	111.11 S 90.00 W
31	31	111.11	90.00	1.5708	111.11	111.11 N 90.00 W
32	32	111.11	90.00	1.5708	111.11	111.11 N 0.00 E
33	33	111.11	90.00	1.5708	111.11	111.11 S 0.00 E
34	34	111.11	90.00	1.5708	111.11	111.11 S 90.00 W
35	35	111.11	90.00	1.5708	111.11	111.11 N 90.00 W
36	36	111.11	90.00	1.5708	111.11	111.11 N 0.00 E
37	37	111.11	90.00	1.5708	111.11	111.11 S 0.00 E
38	38	111.11	90.00	1.5708	111.11	111.11 S 90.00 W
39	39	111.11	90.00	1.5708	111.11	111.11 N 90.00 W
40	40	111.11	90.00	1.5708	111.11	111.11 N 0.00 E
41	41	111.11	90.00	1.5708	111.11	111.11 S 0.00 E
42	42	111.11	90.00	1.5708	111.11	111.11 S 90.00 W
43	43	111.11	90.00	1.5708	111.11	111.11 N 90.00 W
44	44	111.11	90.00	1.5708	111.11	111.11 N 0.00 E
45	45	111.11	90.00	1.5708	111.11	111.11 S 0.00 E
46	46	111.11	90.00	1.5708	111.11	111.11 S 90.00 W
47	47	111.11	90.00	1.5708	111.11	111.11 N 90.00 W
48	48	111.11	90.00	1.5708	111.11	111.11 N 0.00 E
49	49	111.11	90.00	1.5708	111.11	111.11 S 0.00 E
50	50	111.11	90.00	1.5708	111.11	111.11 S 90.00 W
51	51	111.11	90.00	1.5708	111.11	111.11 N 90.00 W
52	52	111.11	90.00	1.5708	111.11	111.11 N 0.00 E
53	53	111.11	90.00	1.5708	111.11	111.11 S 0.00 E
54	54	111.11	90.00	1.5708	111.11	111.11 S 90.00 W
55	55	111.11	90.00	1.5708	111.11	111.11 N 90.00 W
56	56	111.11	90.00	1.5708	111.11	111.11 N 0.00 E
57	57	111.11	90.00	1.5708	111.11	111.11 S 0.00 E
58	58	111.11	90.00	1.5708	111.11	111.11 S 90.00 W
59	59	111.11	90.00	1.5708	111.11	111.11 N 90.00 W
60	60	111.11	90.00	1.5708	111.11	111.11 N 0.00 E



**SIENNA**  
**VILLAGE OF ANDERSON SPRINGS**  
**SECTION EIGHTEEN-B**

A SUBDIVISION OF 3.489 ACRES OF LAND SITUATED IN THE  
 MOSES SHIPMAN LEAGUE, ABSTRACT 86,  
 FORT BEND COUNTY, TEXAS.

15 LOTS 1 RESERVE (0.167 ACRE) 1 BLOCK  
 JANUARY 24, 2012 JOB NO. 1194-1118B-309

OWNERS:  
**SIENNA/JOHNSON NORTH, L.P.**  
 MICHAEL J. SMITH, VICE PRESIDENT/GENERAL MANAGER  
 5777 SDANA PARKWAY, SUITE 100, WESCOUR CITY, TEXAS 77439  
 PH. (281) 778-7777

ENGINEER:  
**LJA Engineering, Inc.**  
 2939 Blumport Drive  
 Suite 600  
 Houston, Texas 77042  
 Phone 713.933.5200  
 Fax 713.933.0206  
 FST-1306

DEWAS NICE ESCROW, JR.  
 10000 W. WINDY HOLLOW LANE  
 HOUSTON, TEXAS 77036  
 TEXAS REGISTRATION NO. 107281

RESERVE TABLE

RESERVE	ACREAGE	SQ.FT.	TYPE
1	0.167	11,500	RESERVED
2	0.167	11,500	RESERVED
3	0.167	11,500	RESERVED
4	0.167	11,500	RESERVED
5	0.167	11,500	RESERVED
6	0.167	11,500	RESERVED
7	0.167	11,500	RESERVED
8	0.167	11,500	RESERVED
9	0.167	11,500	RESERVED
10	0.167	11,500	RESERVED
11	0.167	11,500	RESERVED
12	0.167	11,500	RESERVED
13	0.167	11,500	RESERVED
14	0.167	11,500	RESERVED
15	0.167	11,500	RESERVED
16	0.167	11,500	RESERVED
17	0.167	11,500	RESERVED
18	0.167	11,500	RESERVED
19	0.167	11,500	RESERVED
20	0.167	11,500	RESERVED
21	0.167	11,500	RESERVED
22	0.167	11,500	RESERVED
23	0.167	11,500	RESERVED
24	0.167	11,500	RESERVED
25	0.167	11,500	RESERVED
26	0.167	11,500	RESERVED
27	0.167	11,500	RESERVED
28	0.167	11,500	RESERVED
29	0.167	11,500	RESERVED
30	0.167	11,500	RESERVED
31	0.167	11,500	RESERVED
32	0.167	11,500	RESERVED
33	0.167	11,500	RESERVED
34	0.167	11,500	RESERVED
35	0.167	11,500	RESERVED
36	0.167	11,500	RESERVED
37	0.167	11,500	RESERVED
38	0.167	11,500	RESERVED
39	0.167	11,500	RESERVED
40	0.167	11,500	RESERVED
41	0.167	11,500	RESERVED
42	0.167	11,500	RESERVED
43	0.167	11,500	RESERVED
44	0.167	11,500	RESERVED
45	0.167	11,500	RESERVED
46	0.167	11,500	RESERVED
47	0.167	11,500	RESERVED
48	0.167	11,500	RESERVED
49	0.167	11,500	RESERVED
50	0.167	11,500	RESERVED
51	0.167	11,500	RESERVED
52	0.167	11,500	RESERVED
53	0.167	11,500	RESERVED
54	0.167	11,500	RESERVED
55	0.167	11,500	RESERVED
56	0.167	11,500	RESERVED
57	0.167	11,500	RESERVED
58	0.167	11,500	RESERVED
59	0.167	11,500	RESERVED
60	0.167	11,500	RESERVED

CALL NO. 62402 ACRES  
 WATER SURVEY CORPORATION  
 VOL. 2192 PG. 1475  
 F.B.C.P.R.  
 CITY OF WISDOM CITY - CITY LIMITS A.E.P. 1/12/12

P.O.B.