

PLAT RECORDING SHEET

PLAT NAME: Katy Creek Ranch, Sec. 8

PLAT NO: _____

ACREAGE: 12.7976

LEAGUE: Stephen Habermacher Survey

ABSTRACT NUMBER: 189

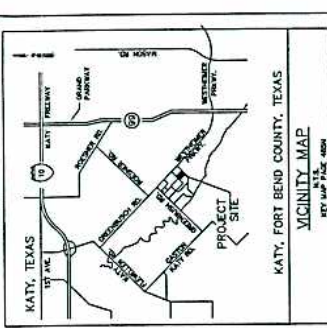
NUMBER OF BLOCKS: 2

NUMBER OF LOTS: 75

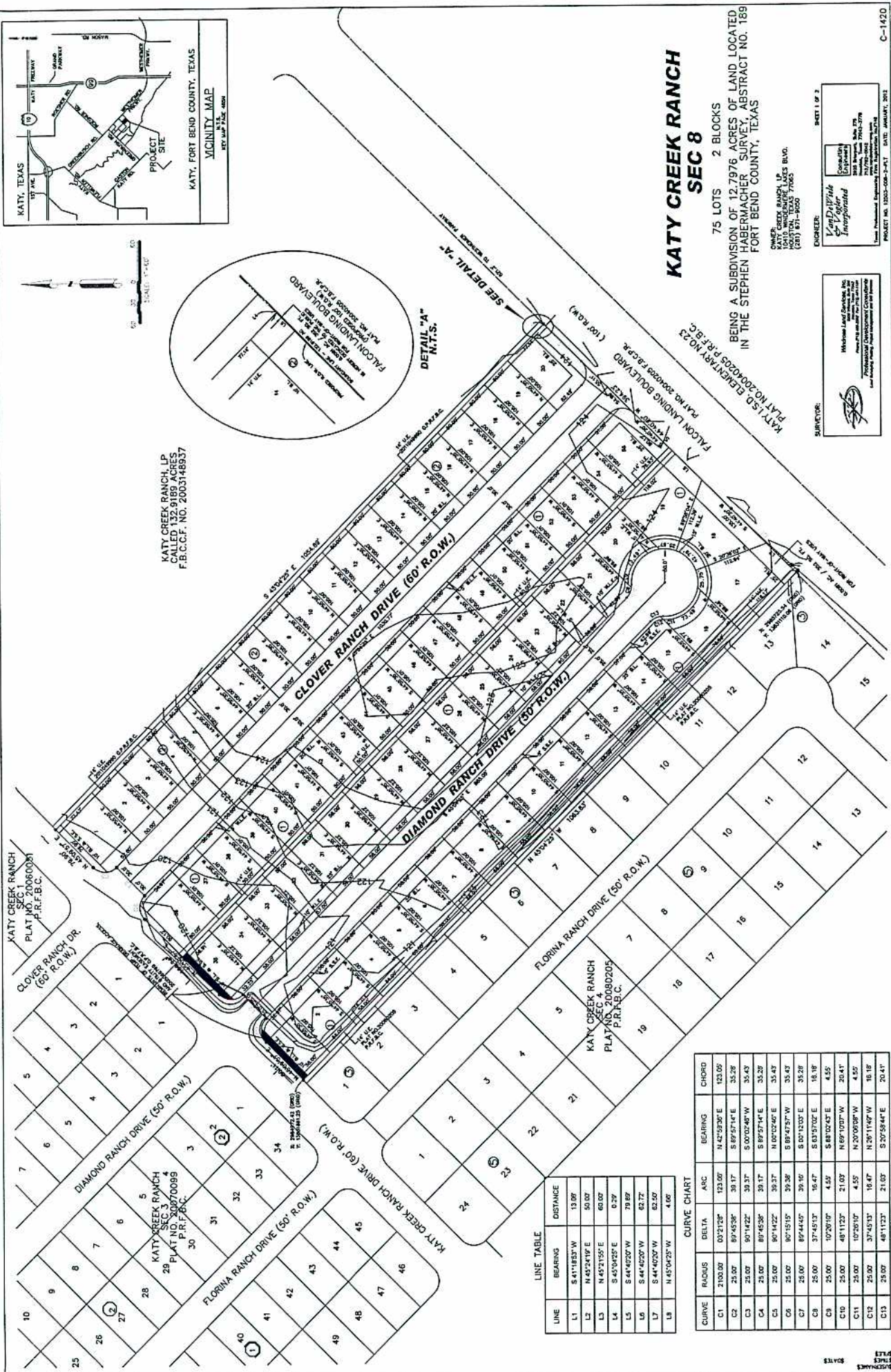
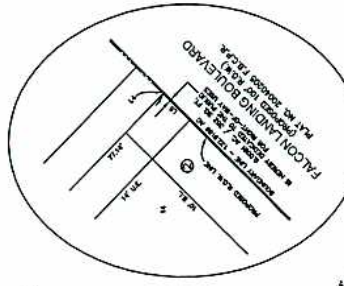
NUMBER OF RESERVES: 0

OWNERS: Katy Creek Ranch, LP

(DEPUTY CLERK)



KATY CREEK RANCH LP
CALLED 132.9189 ACRES
F.B.C.F. NO. 2003148937



KATY CREEK RANCH SEC 8

75 LOTS 2 BLOCKS
BEING A SUBDIVISION OF 12.7976 ACRES OF LAND LOCATED
IN THE STEPHEN HABERMACHER SURVEY, ABSTRACT NO. 189
FORT BEND COUNTY, TEXAS

OWNER:
KATY CREEK RANCH LP
HOUSTON, TEXAS 77065
(281) 671-9650

ENGINEER:
V.D. White
Civil Engineer
Incorporated
3800 West Loop West, Suite 170
Houston, Texas 77026
(713) 470-1000

PROJECT NO. 12003-088-3-PL1 DATE: JANUARY, 2011
SHEET 1 OF 2



LINE TABLE

LINE	BEARING	DISTANCE
L1	S 41°18'33" W	13.00'
L2	N 45°24'19" E	50.00'
L3	N 45°21'55" E	60.00'
L4	S 45°04'25" E	0.29'
L5	S 44°40'20" W	79.89'
L6	S 44°40'20" W	62.72'
L7	S 44°40'20" W	62.50'
L8	N 45°04'25" W	4.66'

CURVE CHART

CURVE	RADIUS	DELTA	ARC	BEARING	CHORD
C1	2100.00	0°21'20"	123.00'	N 42°59'30" E	123.00'
C2	25.00'	89°45'36"	39.17'	S 89°57'14" E	35.28'
C3	25.00'	90°14'22"	39.37'	S 0°02'48" W	35.42'
C4	25.00'	89°45'36"	39.17'	S 89°57'14" E	35.28'
C5	25.00'	90°14'22"	39.37'	N 0°02'48" E	35.42'
C6	25.00'	89°45'36"	39.36'	S 89°47'37" W	35.43'
C7	25.00'	89°44'45"	39.16'	S 0°12'03" E	35.28'
C8	25.00'	37°45'13"	16.47'	S 83°57'02" E	16.18'
C9	25.00'	10°29'10"	4.55'	S 88°02'43" E	4.55'
C10	25.00'	48°11'23"	21.03'	N 69°10'07" W	20.41'
C11	25.00'	10°29'10"	4.55'	N 20°06'09" W	4.55'
C12	25.00'	37°45'13"	16.47'	N 26°11'40" W	16.18'
C13	25.00'	48°11'23"	21.03'	S 20°58'44" E	20.41'