

PLAT RECORDING SHEET

PLAT NAME: Sienna Village of Anderson Springs, Sec. 26-B

PLAT NO: _____

ACREAGE: 15.205

LEAGUE: Moses Shipman League

ABSTRACT NUMBER: 86

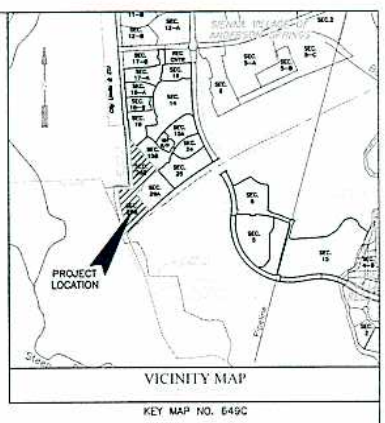
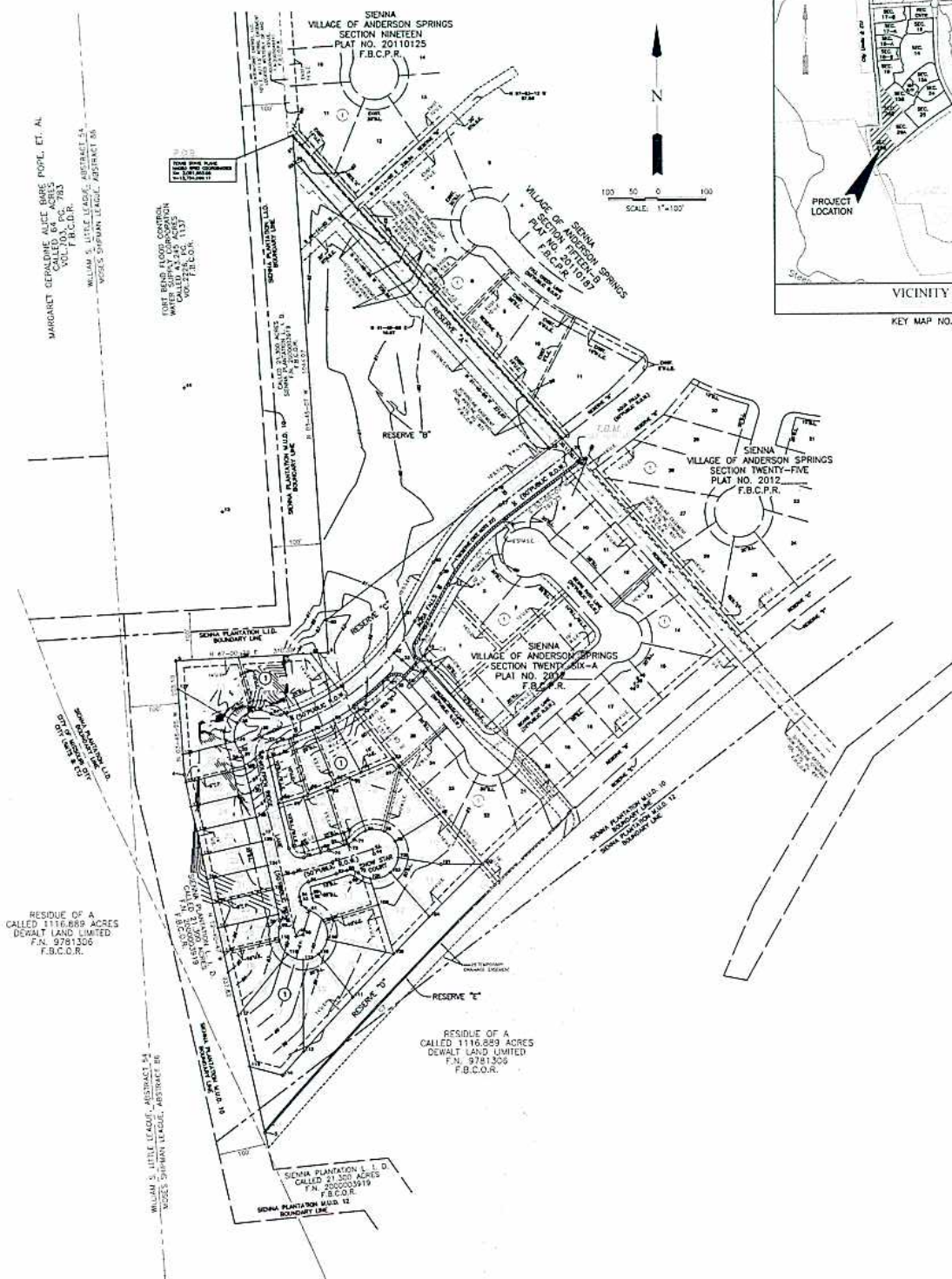
NUMBER OF BLOCKS: 1

NUMBER OF LOTS: 29

NUMBER OF RESERVES: 5

OWNERS: Sienna/Johnson North, L.P.

(DEPUTY CLERK)



MARGARET CEPALDINE ALICE BARE POPE, ET. AL.
 CALLED 201, P.C. 783
 F.B.C.D.R.
 WILLIAM S. LITTLE LEASE, ABSTRACT 54,
 MOSES SHIPMAN LEAGUE, ABSTRACT 86

RESIDUE OF A
 CALLED 1116.889 ACRES
 DEWALT LAND LIMITED
 F.N. 9781306
 F.B.C.D.R.

RESIDUE OF A
 CALLED 1116.889 ACRES
 DEWALT LAND LIMITED
 F.N. 9781306
 F.B.C.D.R.

LINE NO.	BEARING	DISTANCE	ACRES	SECTION
C1	N 65.00° E	44.43	0.2227	20-20-23 W
C2	S 75.00° W	17.43	0.0871	20-13-26 W
C3	S 80.00° W	21.43	0.1071	20-09-20 E
C4	S 75.00° W	3.20	0.0160	20-20-23 W
C5	S 75.00° W	34.00	0.1700	20-09-20 E
C6	S 75.00° W	44.87	0.2243	20-09-20 E
C7	S 75.00° W	346.80	1.7340	20-09-20 E
C8	S 75.00° W	134.11	0.6705	20-09-20 E
C9	S 75.00° W	24.70	0.1235	20-09-20 E
C10	S 75.00° W	26.89	0.1344	20-09-20 E
C11	S 75.00° W	29.04	0.1452	20-09-20 E
C12	S 75.00° W	8.33	0.0416	20-09-20 E
C13	S 75.00° W	43.11	0.2155	20-09-20 E
C14	S 75.00° W	33.79	0.1689	20-09-20 E
C15	S 75.00° W	108.00	0.5400	20-09-20 E
C16	S 75.00° W	34.70	0.1735	20-09-20 E
C17	S 75.00° W	15.00	0.0750	20-09-20 E
C18	S 75.00° W	44.10	0.2205	20-09-20 E
C19	S 75.00° W	6.44	0.0322	20-09-20 E
C20	S 75.00° W	6.03	0.0301	20-09-20 E
C21	S 75.00° W	20.11	0.1005	20-09-20 E
C22	S 75.00° W	19.70	0.0985	20-09-20 E
C23	S 75.00° W	174.30	0.8715	20-09-20 E
C24	S 75.00° W	80.71	0.4035	20-09-20 E
C25	S 75.00° W	13.71	0.0685	20-09-20 E
C26	S 75.00° W	14.15	0.0707	20-09-20 E
C27	S 75.00° W	87.12	0.4356	20-09-20 E
C28	S 75.00° W	43.32	0.2166	20-09-20 E
C29	S 75.00° W	43.31	0.2165	20-09-20 E
C30	S 75.00° W	194.50	0.9725	20-09-20 E
C31	S 75.00° W	348.72	1.7436	20-09-20 E

LINE NO.	BEARING	DISTANCE	ACRES	SECTION
L1	S 75-00-38 W	33.00		
L2	S 75-00-38 W	49.97		
L3	S 75-00-38 W	23.33		
L4	S 75-00-38 W	6.33		
L5	S 75-00-38 W	108.43		
L6	S 75-00-38 W	23.33		
L7	S 75-00-38 W	6.33		
L8	S 75-00-38 W	24.15		
L9	S 75-00-38 W	49.97		
L10	S 75-00-38 W	10.00		
L11	S 75-00-38 W	13.00		
L12	S 75-00-38 W	6.33		
L13	S 75-00-38 W	6.33		
L14	S 75-00-38 W	6.33		
L15	S 75-00-38 W	6.33		

RESERVE	ACREAGE	SQ. FT.	TYPE
RESERVE A			
RESERVE B			
RESERVE C			
RESERVE D			
RESERVE E			
RESERVE F			

SIENNA VILLAGE OF ANDERSON SPRINGS SECTION TWENTY SIX-B

A SUBDIVISION OF 15,205 ACRES OF LAND SITUATED IN THE
 MOSES SHIPMAN LEAGUE, ABSTRACT 86,
 FORT BEND COUNTY, TEXAS.

29 LOTS 5 RESERVES (7,217 ACRES) 1 BLOCK
 JANUARY 10, 2012 JOB NO. 1194-1126B-309

OWNERS:
SIENNA/ JOHNSON NORTH, L.P.
 MICHAEL J. SMITH, VICE PRESIDENT/GENERAL MANAGER
 5777 SIENNA PARKWAY, SUITE 100, MISSOURI CITY, TEXAS 77459
 PH. (281) 778-7777

ENGINEER:
LJA Engineering, Inc.
 2305 Blaupark Drive
 Suite 606
 Houston, Texas 77042
 Phone 713.933.3200
 Fax 713.933.4302
 FRNF-1388

GARY D. NUTTER
 REGISTERED PROFESSIONAL LAND SURVEYOR
 TEXAS REGISTRATION NO. 3659

OMAR NOE ESCOBAR, JR.
 LICENSED PROFESSIONAL ENGINEER
 TEXAS REGISTRATION NO. 101281