



FORT BEND COUNTY ENGINEERING

Fort Bend County, Texas

D. Jesse Hegemier
County Engineer

December 12, 2011

Commissioner W. A. "Andy" Meyers
Fort Bend County Precinct 3
22333 Grand Corner Drive
Katy, Texas 77494

**RE: Fieldstone, Section 2 -Traffic Control Plan
Fieldstone, Section 4**

Dear Commissioner:

Fort Bend County Engineering has completed and recommends approval of the traffic control plans for the above referenced subdivisions. The public hearing date for acceptance of the plans is being scheduled.

A copy of the traffic control plan is attached for your review. If you should have any questions, please give me a call.

Sincerely,

A handwritten signature in blue ink that reads "Steven L. Evans".

Steven L. Evans
Assistant to County Engineer

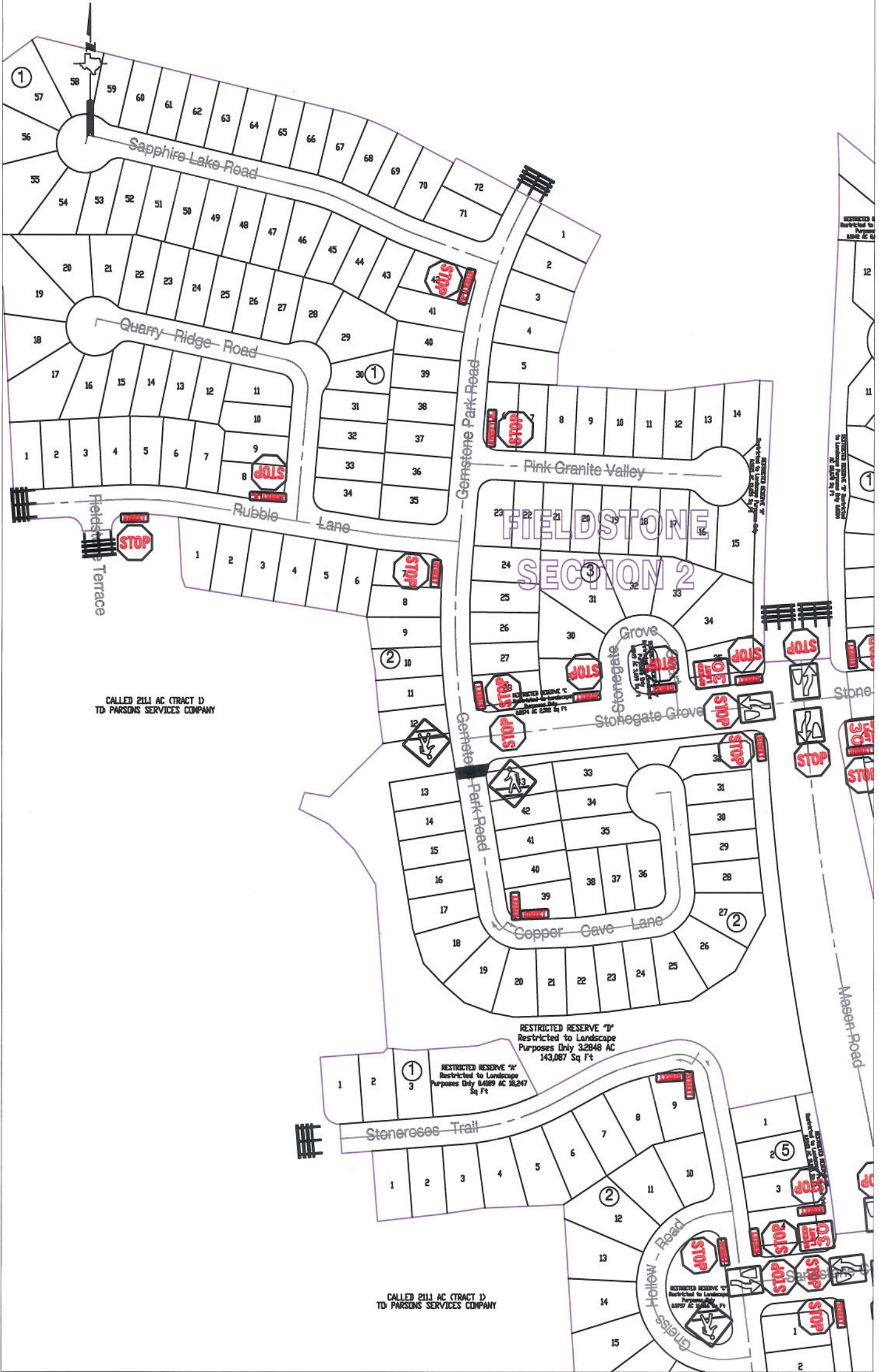
SLE/mjs

cc: Judge Robert E. Hebert, County Judge
Marc Grant - FBC Road & Bridge
Marc Grant - Signage Department
File

P.O. Box 1449 • 1124 Blume Road • Rosenberg, Texas 77471 • (281) 633-7500 • Fax (281) 342-7366

I:\WPDATA\LETTERS\TRAFSTUD\051941211_t01.doc

CALLED 211.1 AC (TRACT 1)
TO PARSONS SERVICES COMPANY



CALLED 211.1 AC (TRACT 1)
TO PARSONS SERVICES COMPANY

RESTRICTED RESERVE "B"
Restricted to Landscape
Purposes Only 3,2848 AC
143,087 Sq Ft

RESTRICTED RESERVE "A"
Restricted to Landscape
Purposes Only 0.4189 AC 18,247
Sq Ft

CALLED 211.1 AC (TRACT 1)
TO PARSONS SERVICES COMPANY

Note:

The purpose of this traffic control plan is to establish traffic control for Fieldstone, Section 2.

Drawn By: L. Brdecka

Date: 12-8-11

Approved By: Steven L. Evans

Date: 12-8-11

Scale

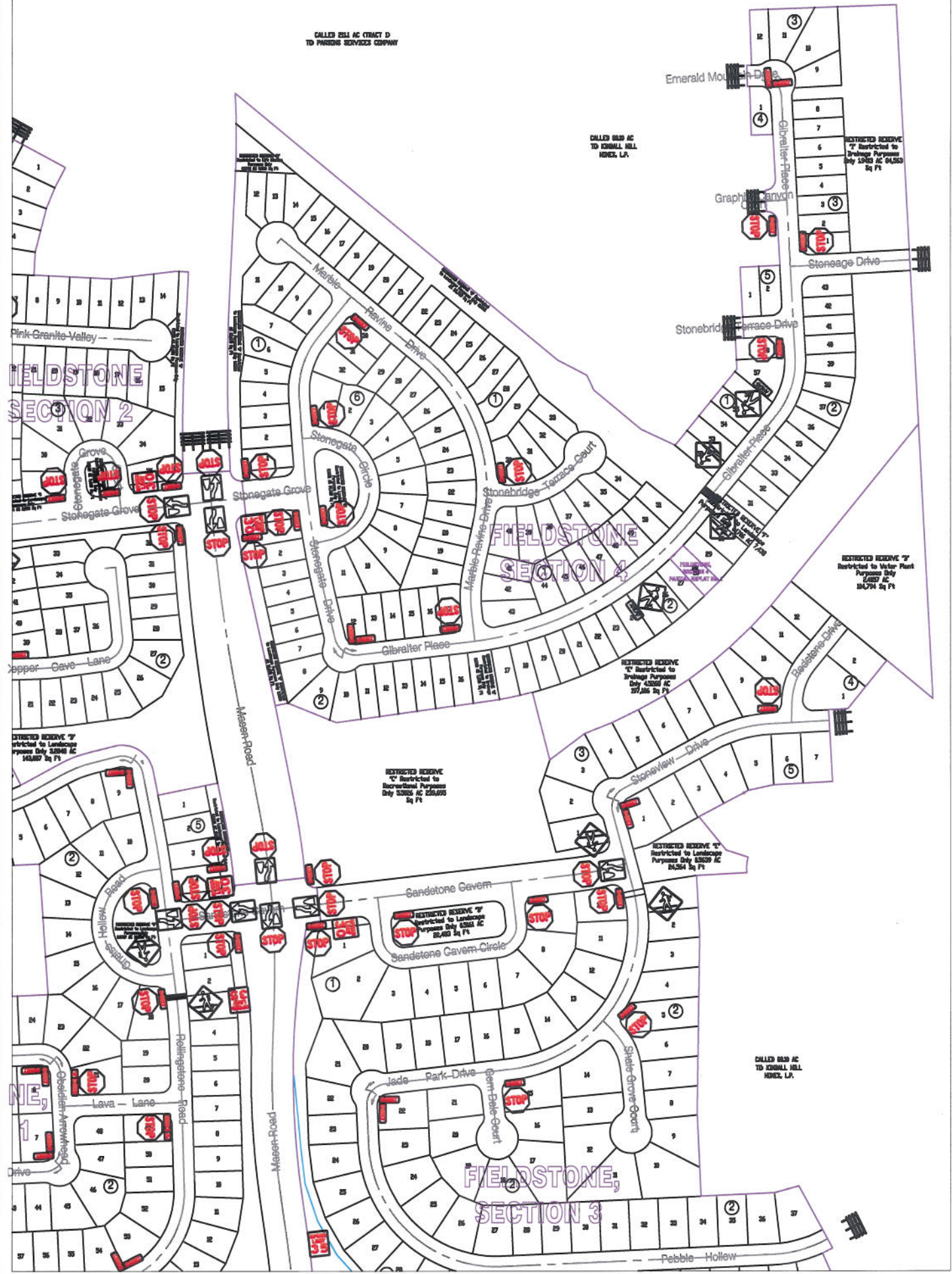
1" = 200'-0"

**Fieldstone, Section 2
Control Map and
Traffic Sign Layout**

Fort Bend County Engineering Dept.
1124 Blume Road
Rosenberg, Texas 77471



CALLED 854 AC TRACT D
TO PARSON SERVICES COMPANY



Note:

The purpose of this traffic control plan is to establish traffic control for Fieldstone, Section 4.

Drawn By: L. Brdecka

Date: 12-8-11

Approved By: Steven L. Evans

Date: 12-8-11

Scale

1" = 200'-0"

**Fieldstone, Section 4
Control Map and
Traffic Sign Layout**

Fort Bend County Engineering Dept.
1124 Blume Road
Rosenberg, Texas 77471