



## FORT BEND COUNTY ENGINEERING

Fort Bend County, Texas

D. Jesse Hegemier  
County Engineer

December 7, 2011

Commissioner W. A. "Andy" Meyers  
Fort Bend County Precinct 3  
1809 Eldridge Road  
Sugar Land, Texas 77478

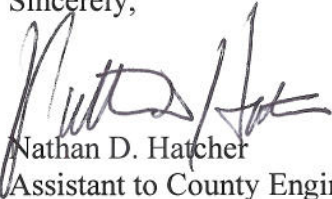
**RE: Firethorne, Section 7 -Traffic Control Plan  
Firethorne, Section 8  
Firethorne, Section 9  
Firethorne, Section 11**

Dear Commissioner:

Fort Bend County Engineering has completed and recommends approval of the traffic control plans for the above referenced subdivisions. The public hearing date for acceptance of the plans is being scheduled.

A copy of the traffic control plan is attached for your review. If you should have any questions, please give me a call.

Sincerely,



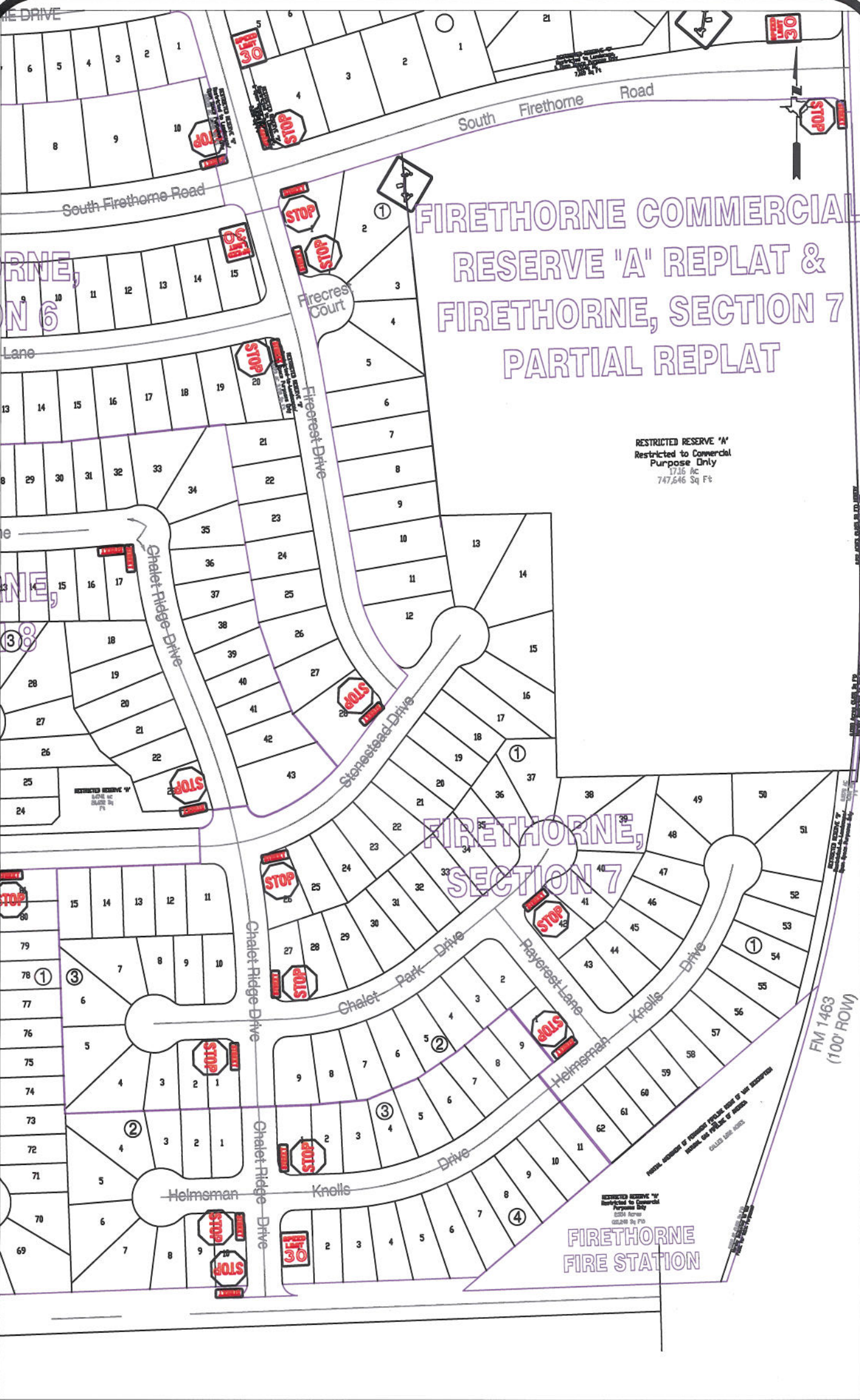
Nathan D. Hatcher  
Assistant to County Engineer

NDH/mjs

cc: Judge Robert E. Hebert, County Judge  
Marc Grant - FBC Road & Bridge  
Marc Grant - Signage Department  
File

P.O. Box 1449 • 1124 Blume Road • Rosenberg, Texas 77471 • (281) 633-7500 • Fax (281) 342-7366

I:\WPDATA\LETTERS\TRAFSTUD\060411211\_t01.doc



FIRETHORNE COMMERCIAL  
RESERVE "A" REPLAT &  
FIRETHORNE, SECTION 7  
PARTIAL REPLAT

RESTRICTED RESERVE "A"  
Restricted to Commercial  
Purpose Only  
17.16 Ac  
747,646 Sq Ft

FIRETHORNE,  
SECTION 7

FIRETHORNE  
FIRE STATION

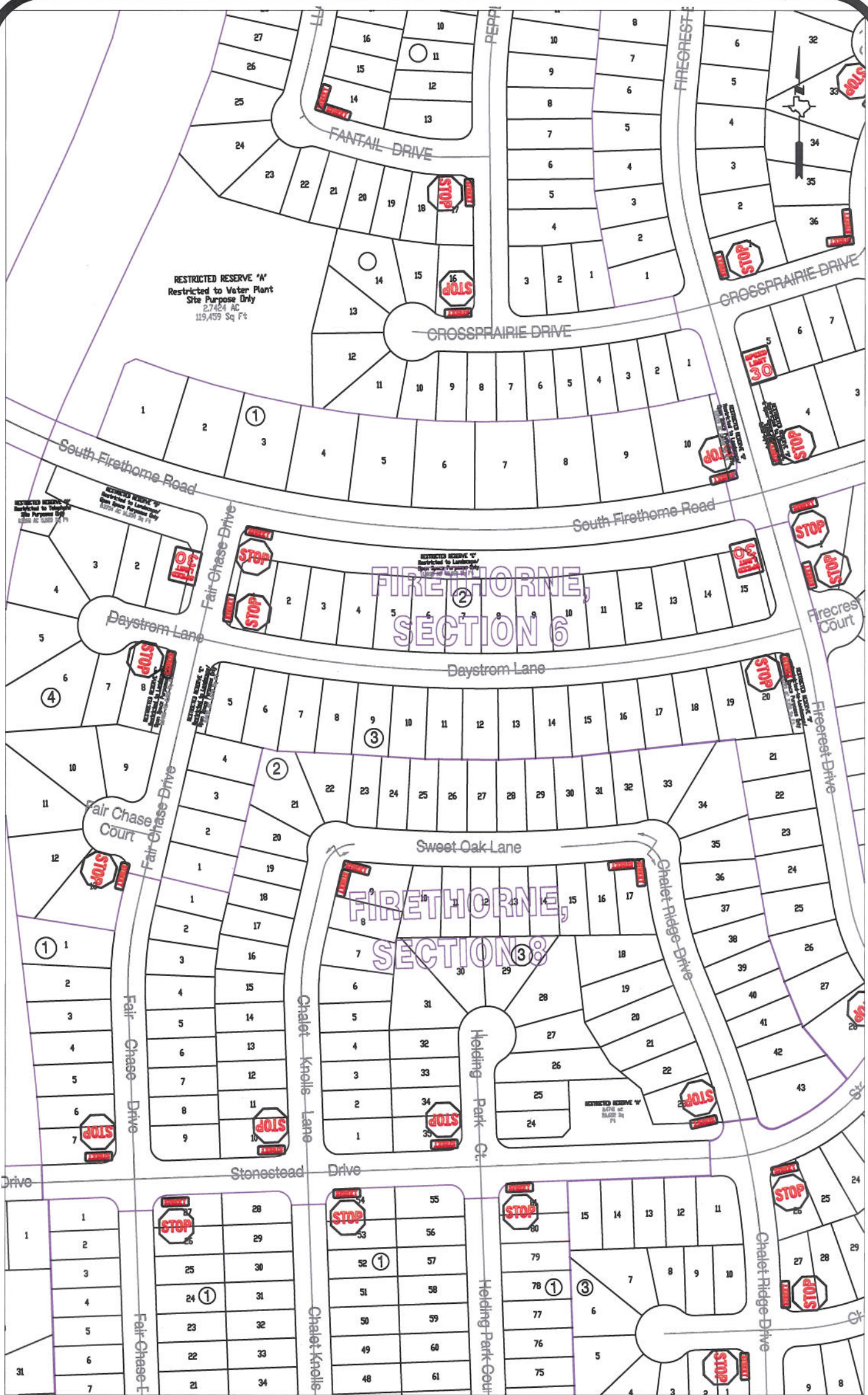
**Note:**

The purpose of this traffic control plan is to establish traffic control for Firethorne, Section 7.

Drawn By: L. Brdecka  
Date: 12-6-11  
Approved By: Nathan Hatcher  
Date: 12-6-11  
Scale  
1" = 200'-0"

**Firethorne, Section 7  
Control Map and  
Traffic Sign Layout**

Fort Bend County Engineering Dept.  
1124 Blume Road  
Rosenberg, Texas 77471



FIRETHORNE,  
SECTION 6

FIRETHORNE,  
SECTION 8

**Note:**

The purpose of this traffic control plan is to establish traffic control for Firethorne, Section 8.

Drawn By: L. Brdecka

Date: 12-6-11

Approved By: Nathan Hatcher

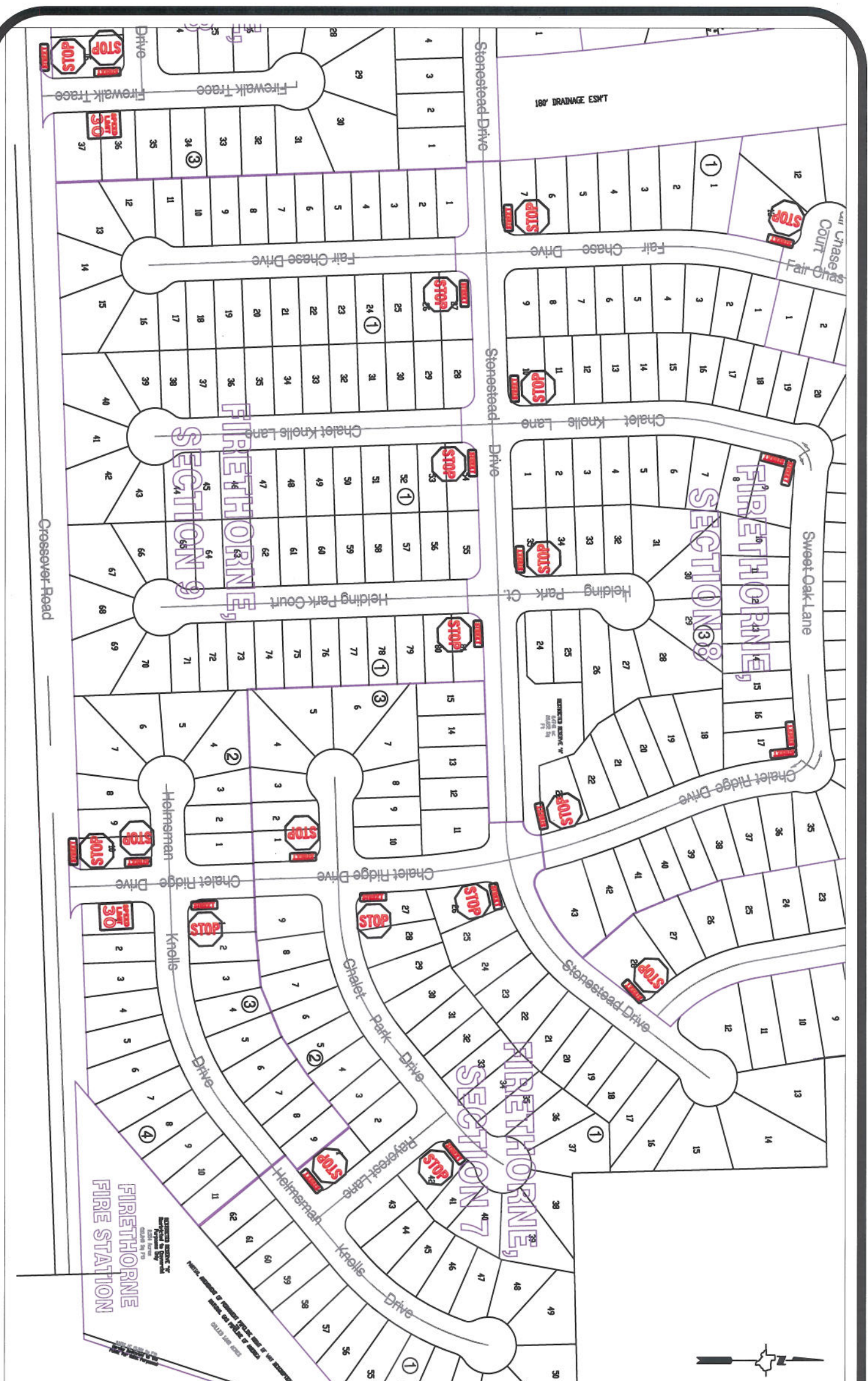
Date: 12-6-11

Scale

1" = 200'-0"

**Firethorne, Section 8  
Control Map and  
Traffic Sign Layout**

Fort Bend County Engineering Dept.  
1124 Blume Road  
Rosenberg, Texas 77471



**Note:**

The purpose of this traffic control plan is to establish traffic control for Firethorne, Section 9.

Drawn By: L. Brdecka

Date: 12-6-11

Approved By: Nathan Hatcher

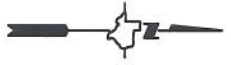
Date: 12-6-11

Scale

1" = 200'-0"

**Firethorne, Section 9  
Control Map and  
Traffic Sign Layout**

Fort Bend County Engineering Dept.  
1124 Blume Road  
Rosenberg, Texas 77471



**Note:**

The purpose of this traffic control plan is to establish traffic control for Firethorne, Section 11.

Drawn By: L. Brdecka

Date: 12-6-11

Approved By: Nathan Hatcher

Date: 12-6-11

Scale  
1" = 200'-0"

**Firethorne, Section 11  
Control Map and  
Traffic Sign Layout**

Fort Bend County Engineering Dept.  
1124 Blume Road  
Rosenberg, Texas 77471