

PLAT RECORDING SHEET

PLAT NAME: Sienna Village of Anderson Springs, Sec. 19

PLAT NO: _____

ACREAGE: 7.496

LEAGUE: Moses Shipman League

ABSTRACT NUMBER: 86

NUMBER OF BLOCKS: 1

NUMBER OF LOTS: 20

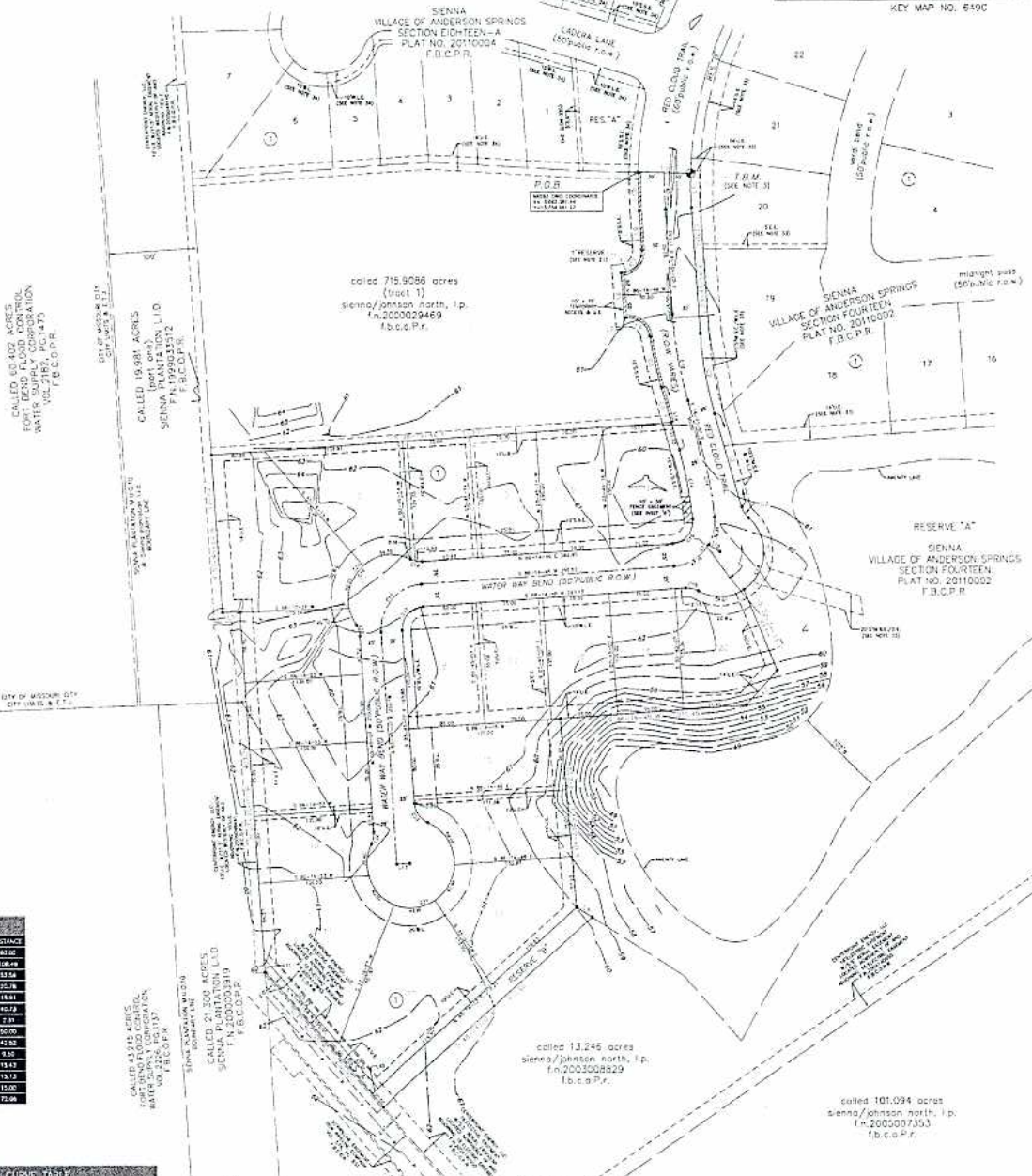
NUMBER OF RESERVES: 2

OWNERS: Sienna/Johnson North, L.P.

(DEPUTY CLERK)



VICINITY MAP
1" = 1,200'
KEY MAP NO. 649C



LINE TABLE

LINE	BEARING	DISTANCE
L1	S 88-37-58 W	43.02
L2	S 18-11-41 E	108.49
L3	S 43-27-42 W	53.56
L4	S 24-28-01 E	25.78
L5	S 87-08-28 W	18.91
L6	S 88-37-58 W	43.02
L7	S 18-11-41 E	108.49
L8	S 43-27-42 W	53.56
L9	S 24-28-01 E	25.78
L10	S 87-08-28 W	18.91
L11	S 88-37-58 W	43.02
L12	S 18-11-41 E	108.49
L13	S 43-27-42 W	53.56
L14	S 24-28-01 E	25.78
L15	S 87-08-28 W	18.91
L16	S 88-37-58 W	43.02

CURVE TABLE

CHORD	BEARING	CHORD	ARC	ANG	DELTA	CHORD	BEARING	CHORD	ARC	ANG	DELTA
C1	N 88-37-58 W	43.02	28.71	31.7157	S 11-06-27 E	43.02	28.71	31.7157	S 11-06-27 E	43.02	28.71
C2	N 88-37-58 W	43.02	43.79	43.79	S 11-06-27 E	43.02	43.79	43.79	S 11-06-27 E	43.02	43.79
C3	N 88-37-58 W	43.02	58.86	58.86	S 11-06-27 E	43.02	58.86	58.86	S 11-06-27 E	43.02	58.86
C4	N 88-37-58 W	43.02	73.93	73.93	S 11-06-27 E	43.02	73.93	73.93	S 11-06-27 E	43.02	73.93
C5	N 88-37-58 W	43.02	89.00	89.00	S 11-06-27 E	43.02	89.00	89.00	S 11-06-27 E	43.02	89.00
C6	N 88-37-58 W	43.02	104.07	104.07	S 11-06-27 E	43.02	104.07	104.07	S 11-06-27 E	43.02	104.07
C7	N 88-37-58 W	43.02	119.14	119.14	S 11-06-27 E	43.02	119.14	119.14	S 11-06-27 E	43.02	119.14
C8	N 88-37-58 W	43.02	134.21	134.21	S 11-06-27 E	43.02	134.21	134.21	S 11-06-27 E	43.02	134.21
C9	N 88-37-58 W	43.02	149.28	149.28	S 11-06-27 E	43.02	149.28	149.28	S 11-06-27 E	43.02	149.28
C10	N 88-37-58 W	43.02	164.35	164.35	S 11-06-27 E	43.02	164.35	164.35	S 11-06-27 E	43.02	164.35
C11	N 88-37-58 W	43.02	179.42	179.42	S 11-06-27 E	43.02	179.42	179.42	S 11-06-27 E	43.02	179.42
C12	N 88-37-58 W	43.02	194.49	194.49	S 11-06-27 E	43.02	194.49	194.49	S 11-06-27 E	43.02	194.49
C13	N 88-37-58 W	43.02	209.56	209.56	S 11-06-27 E	43.02	209.56	209.56	S 11-06-27 E	43.02	209.56
C14	N 88-37-58 W	43.02	224.63	224.63	S 11-06-27 E	43.02	224.63	224.63	S 11-06-27 E	43.02	224.63
C15	N 88-37-58 W	43.02	239.70	239.70	S 11-06-27 E	43.02	239.70	239.70	S 11-06-27 E	43.02	239.70
C16	N 88-37-58 W	43.02	254.77	254.77	S 11-06-27 E	43.02	254.77	254.77	S 11-06-27 E	43.02	254.77
C17	N 88-37-58 W	43.02	269.84	269.84	S 11-06-27 E	43.02	269.84	269.84	S 11-06-27 E	43.02	269.84
C18	N 88-37-58 W	43.02	284.91	284.91	S 11-06-27 E	43.02	284.91	284.91	S 11-06-27 E	43.02	284.91
C19	N 88-37-58 W	43.02	299.98	299.98	S 11-06-27 E	43.02	299.98	299.98	S 11-06-27 E	43.02	299.98
C20	N 88-37-58 W	43.02	315.05	315.05	S 11-06-27 E	43.02	315.05	315.05	S 11-06-27 E	43.02	315.05
C21	N 88-37-58 W	43.02	330.12	330.12	S 11-06-27 E	43.02	330.12	330.12	S 11-06-27 E	43.02	330.12
C22	N 88-37-58 W	43.02	345.19	345.19	S 11-06-27 E	43.02	345.19	345.19	S 11-06-27 E	43.02	345.19
C23	N 88-37-58 W	43.02	360.26	360.26	S 11-06-27 E	43.02	360.26	360.26	S 11-06-27 E	43.02	360.26
C24	N 88-37-58 W	43.02	375.33	375.33	S 11-06-27 E	43.02	375.33	375.33	S 11-06-27 E	43.02	375.33
C25	N 88-37-58 W	43.02	390.40	390.40	S 11-06-27 E	43.02	390.40	390.40	S 11-06-27 E	43.02	390.40

RESERVE TABLE

RESERVE NO	ACRES	SQ FT	TYPE
RESERVE "A"	0.143	3,795	RESTRICTED TO LANDSCAPE/OPEN SPACE/UTILITIES
RESERVE "B"	0.143	3,795	RESTRICTED TO LANDSCAPE/OPEN SPACE/UTILITIES
TOTAL	0.286	7,590	

SIENNA VILLAGE OF ANDERSON SPRINGS SECTION NINETEEN

A SUBDIVISION OF TWENTY-NINE ACRES OF LAND SITUATED IN THE BLOCK 10914, TRACT 109, FORT BEND COUNTY, TEXAS

20 LOTS 2 RESERVES (0.186 ACRE) 1 BLOCK
JULY 19, 2011 JOB NO. 1194-1119-309

OWNERS:
SIENNA/ JOHNSON NORTH, L.P.
MICHAEL J. SMITH, VICE PRESIDENT/GENERAL MANAGER
5777 SIENNA PARKWAY, SUITE 100, MISSOURI CITY, TEXAS 77458
Ph: (281) 778-7777

ENGINEER:
LJA Engineering, Inc.
2929 Briarpark Drive, Suite 500, Houston, Texas 77042
Phone 713 953 5200 Fax 713 953 5006 FRN-F-1388

KEITH W. WUNDER, REGISTERED PROFESSIONAL LAND SURVEYOR, TEXAS REGISTRATION NO. 4797
OMAR NOC ESCOBAR, JR., LICENSED PROFESSIONAL ENGINEER, TEXAS REGISTRATION NO. 107281