

PLAT RECORDING SHEET

PLAT NAME: Katy ISD Elementary School Site No. 35

PLAT NO: _____

ACREAGE: 13.76

LEAGUE: W. M. Andrus Survey

ABSTRACT NUMBER: 752

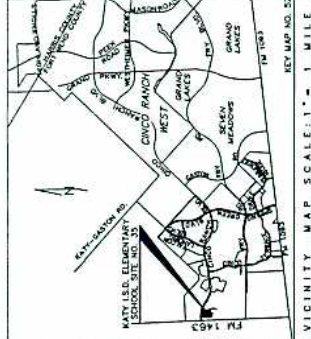
NUMBER OF BLOCKS: 1

NUMBER OF LOTS: 0

NUMBER OF RESERVES: 1

OWNERS: Katy Independent School District

(DEPUTY CLERK)

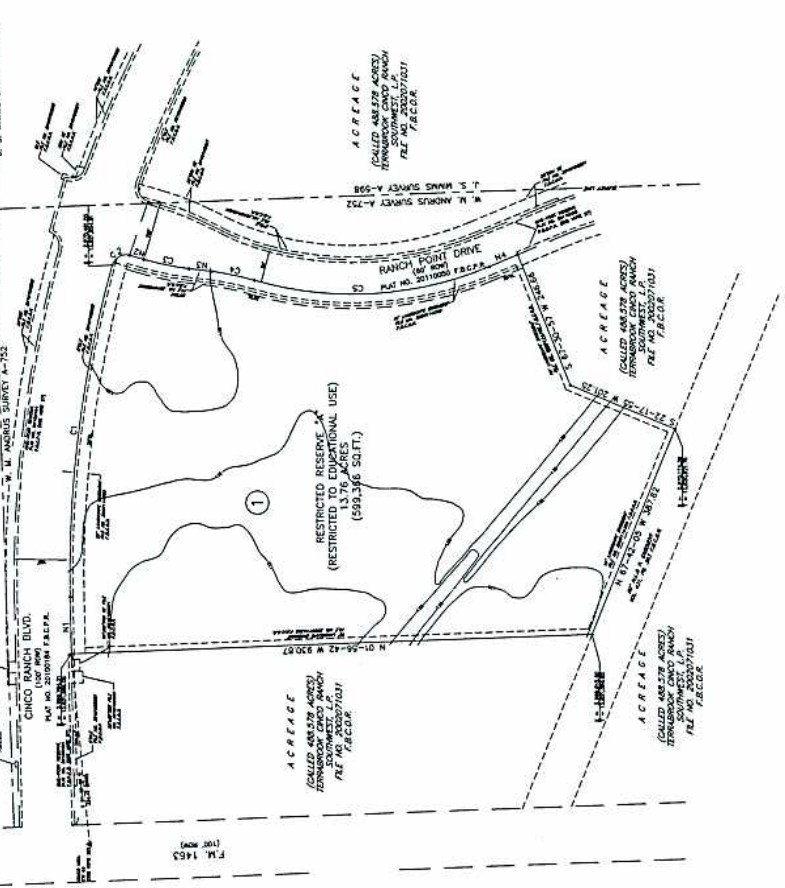


VICINITY MAP SCALE: 1" = 1 MILE
KEY MAP NO. 52

- 1. 10' INDICATES BOUNDARY LINE.
- 2. 10' INDICATES BOUNDARY LINE.
- 3. 10' INDICATES BOUNDARY LINE.
- 4. 10' INDICATES BOUNDARY LINE.
- 5. 10' INDICATES BOUNDARY LINE.
- 6. 10' INDICATES BOUNDARY LINE.
- 7. 10' INDICATES BOUNDARY LINE.
- 8. 10' INDICATES BOUNDARY LINE.
- 9. 10' INDICATES BOUNDARY LINE.
- 10. 10' INDICATES BOUNDARY LINE.
- 11. 10' INDICATES BOUNDARY LINE.
- 12. 10' INDICATES BOUNDARY LINE.
- 13. 10' INDICATES BOUNDARY LINE.
- 14. 10' INDICATES BOUNDARY LINE.
- 15. 10' INDICATES BOUNDARY LINE.
- 16. 10' INDICATES BOUNDARY LINE.
- 17. 10' INDICATES BOUNDARY LINE.
- 18. 10' INDICATES BOUNDARY LINE.
- 19. 10' INDICATES BOUNDARY LINE.
- 20. 10' INDICATES BOUNDARY LINE.
- 21. 10' INDICATES BOUNDARY LINE.
- 22. 10' INDICATES BOUNDARY LINE.
- 23. 10' INDICATES BOUNDARY LINE.
- 24. 10' INDICATES BOUNDARY LINE.
- 25. 10' INDICATES BOUNDARY LINE.
- 26. 10' INDICATES BOUNDARY LINE.
- 27. 10' INDICATES BOUNDARY LINE.
- 28. 10' INDICATES BOUNDARY LINE.
- 29. 10' INDICATES BOUNDARY LINE.
- 30. 10' INDICATES BOUNDARY LINE.
- 31. 10' INDICATES BOUNDARY LINE.
- 32. 10' INDICATES BOUNDARY LINE.
- 33. 10' INDICATES BOUNDARY LINE.
- 34. 10' INDICATES BOUNDARY LINE.
- 35. 10' INDICATES BOUNDARY LINE.



SCALE IN FEET



OWNER NAME

NAME	ADDRESS	CITY	STATE	ZIP
1	111-1108	HOUSTON	TX	77036
2	111-1108	HOUSTON	TX	77036
3	111-1108	HOUSTON	TX	77036
4	111-1108	HOUSTON	TX	77036
5	111-1108	HOUSTON	TX	77036
6	111-1108	HOUSTON	TX	77036
7	111-1108	HOUSTON	TX	77036
8	111-1108	HOUSTON	TX	77036
9	111-1108	HOUSTON	TX	77036
10	111-1108	HOUSTON	TX	77036
11	111-1108	HOUSTON	TX	77036
12	111-1108	HOUSTON	TX	77036
13	111-1108	HOUSTON	TX	77036
14	111-1108	HOUSTON	TX	77036
15	111-1108	HOUSTON	TX	77036
16	111-1108	HOUSTON	TX	77036
17	111-1108	HOUSTON	TX	77036
18	111-1108	HOUSTON	TX	77036
19	111-1108	HOUSTON	TX	77036
20	111-1108	HOUSTON	TX	77036
21	111-1108	HOUSTON	TX	77036
22	111-1108	HOUSTON	TX	77036
23	111-1108	HOUSTON	TX	77036
24	111-1108	HOUSTON	TX	77036
25	111-1108	HOUSTON	TX	77036
26	111-1108	HOUSTON	TX	77036
27	111-1108	HOUSTON	TX	77036
28	111-1108	HOUSTON	TX	77036
29	111-1108	HOUSTON	TX	77036
30	111-1108	HOUSTON	TX	77036
31	111-1108	HOUSTON	TX	77036
32	111-1108	HOUSTON	TX	77036
33	111-1108	HOUSTON	TX	77036
34	111-1108	HOUSTON	TX	77036
35	111-1108	HOUSTON	TX	77036

DISTRICT NAMES:	
W.C.I.D.	N / A
M.U.D.	C.S.M.U.D. 3
D.I.D.	D.I.D.
SCHOOL	KATY I.S.D.
FIRE	F.B.E.S.D. NO.2
IMPACT FEE AREA	N / A
CITY OR CITY E.T.J.	HOUSTON E.T.J.
UTILITIES CO.	CENTERPOINT

KATY I S D ELEMENTARY SCHOOL SITE NO 35

BEING A SUBDIVISION OF
13.76 ACRES OUT OF THE
W. M. ANDRUS SURVEY, A-752
FORT BEND COUNTY, TEXAS

1 BLOCK
SCALE: 1" = 100'
DATE: MAY, 2011
OWNER: KATY INDEPENDENT SCHOOL DISTRICT
6301 SOUTH SHADON LAKE
KATY, TX 77444 (281) 356-6000



COUNTY OF FORT BEND
STATE OF TEXAS
I, _____, COUNTY CLERK OF FORT BEND COUNTY, TEXAS, DO HEREBY CERTIFY THAT THE PLAT ABOVE IS A TRUE AND CORRECT COPY OF THE ORIGINAL AS FILED IN MY OFFICE ON _____ DAY OF _____, 2011.
AT WACO, TEXAS.

APPROVED BY THE COMMISSIONERS COURT OF FORT BEND COUNTY, TEXAS, THIS _____ DAY OF _____, 2011.
COMMISSIONER #1
COMMISSIONER #2
COMMISSIONER #3
COMMISSIONER #4
COMMISSIONER #5
COMMISSIONER #6
COMMISSIONER #7
COMMISSIONER #8
COMMISSIONER #9
COMMISSIONER #10
COMMISSIONER #11
COMMISSIONER #12
COMMISSIONER #13
COMMISSIONER #14
COMMISSIONER #15
COMMISSIONER #16
COMMISSIONER #17
COMMISSIONER #18
COMMISSIONER #19
COMMISSIONER #20
COMMISSIONER #21
COMMISSIONER #22
COMMISSIONER #23
COMMISSIONER #24
COMMISSIONER #25
COMMISSIONER #26
COMMISSIONER #27
COMMISSIONER #28
COMMISSIONER #29
COMMISSIONER #30
COMMISSIONER #31
COMMISSIONER #32
COMMISSIONER #33
COMMISSIONER #34
COMMISSIONER #35

STATE OF TEXAS
COUNTY OF FORT BEND
I, _____, COUNTY CLERK OF FORT BEND COUNTY, TEXAS, DO HEREBY CERTIFY THAT THE PLAT ABOVE IS A TRUE AND CORRECT COPY OF THE ORIGINAL AS FILED IN MY OFFICE ON _____ DAY OF _____, 2011.
AT WACO, TEXAS.

APPROVED BY THE COMMISSIONERS COURT OF FORT BEND COUNTY, TEXAS, THIS _____ DAY OF _____, 2011.
COMMISSIONER #1
COMMISSIONER #2
COMMISSIONER #3
COMMISSIONER #4
COMMISSIONER #5
COMMISSIONER #6
COMMISSIONER #7
COMMISSIONER #8
COMMISSIONER #9
COMMISSIONER #10
COMMISSIONER #11
COMMISSIONER #12
COMMISSIONER #13
COMMISSIONER #14
COMMISSIONER #15
COMMISSIONER #16
COMMISSIONER #17
COMMISSIONER #18
COMMISSIONER #19
COMMISSIONER #20
COMMISSIONER #21
COMMISSIONER #22
COMMISSIONER #23
COMMISSIONER #24
COMMISSIONER #25
COMMISSIONER #26
COMMISSIONER #27
COMMISSIONER #28
COMMISSIONER #29
COMMISSIONER #30
COMMISSIONER #31
COMMISSIONER #32
COMMISSIONER #33
COMMISSIONER #34
COMMISSIONER #35