

# PLAT RECORDING SHEET

PLAT NAME: Cinco Ranch Southwest, Section 52

PLAT NO: \_\_\_\_\_

ACREAGE: 20.4109

LEAGUE: J.S. Mimms Survey

ABSTRACT NUMBER: 598

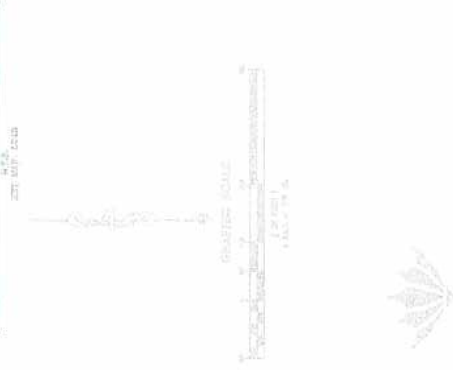
NUMBER OF BLOCKS: 66

NUMBER OF LOTS: 4

NUMBER OF RESERVES: 4

OWNERS: Terrabrook Cinco Ranch Southwest, L.P.

\_\_\_\_\_  
(DEPUTY CLERK)



# CINCO RANCH SOUTHWEST SEC 5

A SUBDIVISION OF  
20.4109 ACRES LOCATED IN THE  
J.S. MIMS SURVEY, A-598,  
FORT BEND COUNTY, TEXAS

88 LOTS 4 BLOCKS 4 RESERVES

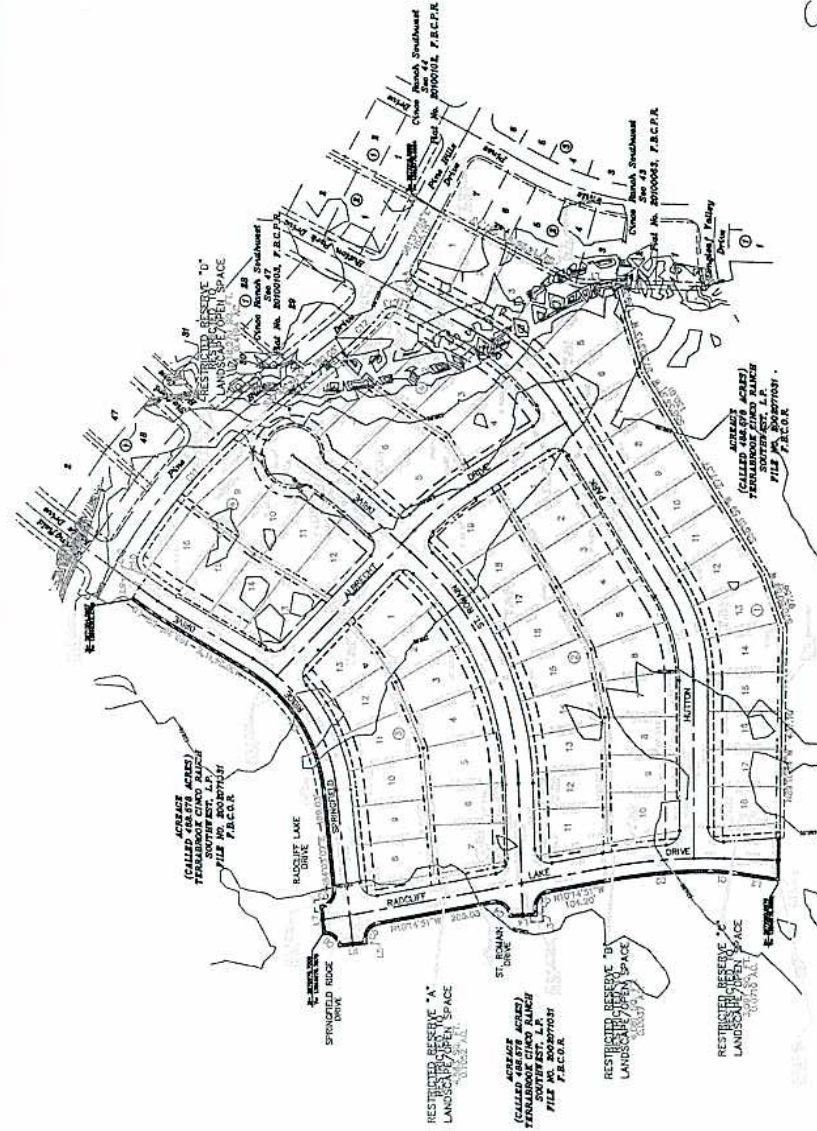
DATE: 08/20/2018

BY: TERRABROOK CINCO RANCH SOUTHWEST, L.P.  
A DELAWARE LIMITED PARTNERSHIP  
TERRABROOK CINCO RANCH SOUTHWEST GP, L.L.C.  
A DELAWARE LIMITED LIABILITY COMPANY  
ITS GENERAL PARTNER

14333 W. LITTLE YORK RD., SUITE 500  
HOUSTON, TEXAS 77057 TEL: 713-972-7600

ARBOREUM ENGINEERING  
& SURVEYING, INC.  
27005 S. GREENWOOD AVENUE,  
STEVENSON, TEXAS 77793  
TEL: 817-422-5034  
FAX: 817-422-5034

TBO PARTNERS  
601 SOUTH WYOMING  
DALLAS, TEXAS 75202  
TEL: 214-424-7910  
FAX: 214-424-7910



- NOTES:**
1. ALL RESERVES SHOWN ON THIS MAP ARE HEREBY LIMITED TO THE RESERVES SHOWN ON THIS MAP AND NO OTHER RESERVES SHALL BE CLAIMED OR ENFORCED.
  2. ALL RESERVES ARE TO BE MAINTAINED AS OPEN SPACE AND SHALL NOT BE USED FOR ANY OTHER PURPOSE.
  3. ALL RESERVES ARE TO BE MAINTAINED AS OPEN SPACE AND SHALL NOT BE USED FOR ANY OTHER PURPOSE.
  4. ALL RESERVES ARE TO BE MAINTAINED AS OPEN SPACE AND SHALL NOT BE USED FOR ANY OTHER PURPOSE.
  5. ALL RESERVES ARE TO BE MAINTAINED AS OPEN SPACE AND SHALL NOT BE USED FOR ANY OTHER PURPOSE.
  6. ALL RESERVES ARE TO BE MAINTAINED AS OPEN SPACE AND SHALL NOT BE USED FOR ANY OTHER PURPOSE.
  7. ALL RESERVES ARE TO BE MAINTAINED AS OPEN SPACE AND SHALL NOT BE USED FOR ANY OTHER PURPOSE.
  8. ALL RESERVES ARE TO BE MAINTAINED AS OPEN SPACE AND SHALL NOT BE USED FOR ANY OTHER PURPOSE.
  9. ALL RESERVES ARE TO BE MAINTAINED AS OPEN SPACE AND SHALL NOT BE USED FOR ANY OTHER PURPOSE.
  10. ALL RESERVES ARE TO BE MAINTAINED AS OPEN SPACE AND SHALL NOT BE USED FOR ANY OTHER PURPOSE.
  11. ALL RESERVES ARE TO BE MAINTAINED AS OPEN SPACE AND SHALL NOT BE USED FOR ANY OTHER PURPOSE.
  12. ALL RESERVES ARE TO BE MAINTAINED AS OPEN SPACE AND SHALL NOT BE USED FOR ANY OTHER PURPOSE.
  13. ALL RESERVES ARE TO BE MAINTAINED AS OPEN SPACE AND SHALL NOT BE USED FOR ANY OTHER PURPOSE.
  14. ALL RESERVES ARE TO BE MAINTAINED AS OPEN SPACE AND SHALL NOT BE USED FOR ANY OTHER PURPOSE.
  15. ALL RESERVES ARE TO BE MAINTAINED AS OPEN SPACE AND SHALL NOT BE USED FOR ANY OTHER PURPOSE.
  16. ALL RESERVES ARE TO BE MAINTAINED AS OPEN SPACE AND SHALL NOT BE USED FOR ANY OTHER PURPOSE.
  17. ALL RESERVES ARE TO BE MAINTAINED AS OPEN SPACE AND SHALL NOT BE USED FOR ANY OTHER PURPOSE.
  18. ALL RESERVES ARE TO BE MAINTAINED AS OPEN SPACE AND SHALL NOT BE USED FOR ANY OTHER PURPOSE.
  19. ALL RESERVES ARE TO BE MAINTAINED AS OPEN SPACE AND SHALL NOT BE USED FOR ANY OTHER PURPOSE.
  20. ALL RESERVES ARE TO BE MAINTAINED AS OPEN SPACE AND SHALL NOT BE USED FOR ANY OTHER PURPOSE.

LINE	BEARING	LENGTH	BEARING	CURVED
1	S 89° 52' 00" W	8.00	N 89° 52' 00" E	
2	S 89° 52' 00" W	8.00	N 89° 52' 00" E	
3	S 89° 52' 00" W	8.00	N 89° 52' 00" E	
4	S 89° 52' 00" W	8.00	N 89° 52' 00" E	
5	S 89° 52' 00" W	8.00	N 89° 52' 00" E	
6	S 89° 52' 00" W	8.00	N 89° 52' 00" E	
7	S 89° 52' 00" W	8.00	N 89° 52' 00" E	
8	S 89° 52' 00" W	8.00	N 89° 52' 00" E	
9	S 89° 52' 00" W	8.00	N 89° 52' 00" E	
10	S 89° 52' 00" W	8.00	N 89° 52' 00" E	
11	S 89° 52' 00" W	8.00	N 89° 52' 00" E	
12	S 89° 52' 00" W	8.00	N 89° 52' 00" E	
13	S 89° 52' 00" W	8.00	N 89° 52' 00" E	
14	S 89° 52' 00" W	8.00	N 89° 52' 00" E	
15	S 89° 52' 00" W	8.00	N 89° 52' 00" E	
16	S 89° 52' 00" W	8.00	N 89° 52' 00" E	
17	S 89° 52' 00" W	8.00	N 89° 52' 00" E	
18	S 89° 52' 00" W	8.00	N 89° 52' 00" E	
19	S 89° 52' 00" W	8.00	N 89° 52' 00" E	
20	S 89° 52' 00" W	8.00	N 89° 52' 00" E	

LINE	BEARING	LENGTH	BEARING	CURVED
21	S 89° 52' 00" W	8.00	N 89° 52' 00" E	
22	S 89° 52' 00" W	8.00	N 89° 52' 00" E	
23	S 89° 52' 00" W	8.00	N 89° 52' 00" E	
24	S 89° 52' 00" W	8.00	N 89° 52' 00" E	
25	S 89° 52' 00" W	8.00	N 89° 52' 00" E	
26	S 89° 52' 00" W	8.00	N 89° 52' 00" E	
27	S 89° 52' 00" W	8.00	N 89° 52' 00" E	
28	S 89° 52' 00" W	8.00	N 89° 52' 00" E	
29	S 89° 52' 00" W	8.00	N 89° 52' 00" E	
30	S 89° 52' 00" W	8.00	N 89° 52' 00" E	
31	S 89° 52' 00" W	8.00	N 89° 52' 00" E	
32	S 89° 52' 00" W	8.00	N 89° 52' 00" E	
33	S 89° 52' 00" W	8.00	N 89° 52' 00" E	
34	S 89° 52' 00" W	8.00	N 89° 52' 00" E	
35	S 89° 52' 00" W	8.00	N 89° 52' 00" E	
36	S 89° 52' 00" W	8.00	N 89° 52' 00" E	
37	S 89° 52' 00" W	8.00	N 89° 52' 00" E	
38	S 89° 52' 00" W	8.00	N 89° 52' 00" E	
39	S 89° 52' 00" W	8.00	N 89° 52' 00" E	
40	S 89° 52' 00" W	8.00	N 89° 52' 00" E	
41	S 89° 52' 00" W	8.00	N 89° 52' 00" E	
42	S 89° 52' 00" W	8.00	N 89° 52' 00" E	
43	S 89° 52' 00" W	8.00	N 89° 52' 00" E	
44	S 89° 52' 00" W	8.00	N 89° 52' 00" E	
45	S 89° 52' 00" W	8.00	N 89° 52' 00" E	
46	S 89° 52' 00" W	8.00	N 89° 52' 00" E	
47	S 89° 52' 00" W	8.00	N 89° 52' 00" E	
48	S 89° 52' 00" W	8.00	N 89° 52' 00" E	
49	S 89° 52' 00" W	8.00	N 89° 52' 00" E	
50	S 89° 52' 00" W	8.00	N 89° 52' 00" E	
51	S 89° 52' 00" W	8.00	N 89° 52' 00" E	
52	S 89° 52' 00" W	8.00	N 89° 52' 00" E	
53	S 89° 52' 00" W	8.00	N 89° 52' 00" E	
54	S 89° 52' 00" W	8.00	N 89° 52' 00" E	
55	S 89° 52' 00" W	8.00	N 89° 52' 00" E	
56	S 89° 52' 00" W	8.00	N 89° 52' 00" E	
57	S 89° 52' 00" W	8.00	N 89° 52' 00" E	
58	S 89° 52' 00" W	8.00	N 89° 52' 00" E	
59	S 89° 52' 00" W	8.00	N 89° 52' 00" E	
60	S 89° 52' 00" W	8.00	N 89° 52' 00" E	
61	S 89° 52' 00" W	8.00	N 89° 52' 00" E	
62	S 89° 52' 00" W	8.00	N 89° 52' 00" E	
63	S 89° 52' 00" W	8.00	N 89° 52' 00" E	
64	S 89° 52' 00" W	8.00	N 89° 52' 00" E	
65	S 89° 52' 00" W	8.00	N 89° 52' 00" E	
66	S 89° 52' 00" W	8.00	N 89° 52' 00" E	
67	S 89° 52' 00" W	8.00	N 89° 52' 00" E	
68	S 89° 52' 00" W	8.00	N 89° 52' 00" E	
69	S 89° 52' 00" W	8.00	N 89° 52' 00" E	
70	S 89° 52' 00" W	8.00	N 89° 52' 00" E	
71	S 89° 52' 00" W	8.00	N 89° 52' 00" E	
72	S 89° 52' 00" W	8.00	N 89° 52' 00" E	
73	S 89° 52' 00" W	8.00	N 89° 52' 00" E	
74	S 89° 52' 00" W	8.00	N 89° 52' 00" E	
75	S 89° 52' 00" W	8.00	N 89° 52' 00" E	
76	S 89° 52' 00" W	8.00	N 89° 52' 00" E	
77	S 89° 52' 00" W	8.00	N 89° 52' 00" E	
78	S 89° 52' 00" W	8.00	N 89° 52' 00" E	
79	S 89° 52' 00" W	8.00	N 89° 52' 00" E	
80	S 89° 52' 00" W	8.00	N 89° 52' 00" E	
81	S 89° 52' 00" W	8.00	N 89° 52' 00" E	
82	S 89° 52' 00" W	8.00	N 89° 52' 00" E	
83	S 89° 52' 00" W	8.00	N 89° 52' 00" E	
84	S 89° 52' 00" W	8.00	N 89° 52' 00" E	
85	S 89° 52' 00" W	8.00	N 89° 52' 00" E	
86	S 89° 52' 00" W	8.00	N 89° 52' 00" E	
87	S 89° 52' 00" W	8.00	N 89° 52' 00" E	
88	S 89° 52' 00" W	8.00	N 89° 52' 00" E	

RESERVE NO.	RESERVE NAME	ACRES	RESERVE NO.
1	LANDSCAPE OPEN SPACE	1.00	1
2	LANDSCAPE OPEN SPACE	1.00	2
3	LANDSCAPE OPEN SPACE	1.00	3
4	LANDSCAPE OPEN SPACE	1.00	4
5	LANDSCAPE OPEN SPACE	1.00	5
6	LANDSCAPE OPEN SPACE	1.00	6
7	LANDSCAPE OPEN SPACE	1.00	7
8	LANDSCAPE OPEN SPACE	1.00	8
9	LANDSCAPE OPEN SPACE	1.00	9
10	LANDSCAPE OPEN SPACE	1.00	10
11	LANDSCAPE OPEN SPACE	1.00	11
12	LANDSCAPE OPEN SPACE	1.00	12
13	LANDSCAPE OPEN SPACE	1.00	13
14	LANDSCAPE OPEN SPACE	1.00	14
15	LANDSCAPE OPEN SPACE	1.00	15
16	LANDSCAPE OPEN SPACE	1.00	16
17	LANDSCAPE OPEN SPACE	1.00	17
18	LANDSCAPE OPEN SPACE	1.00	18
19	LANDSCAPE OPEN SPACE	1.00	19
20	LANDSCAPE OPEN SPACE	1.00	20
21	LANDSCAPE OPEN SPACE	1.00	21
22	LANDSCAPE OPEN SPACE	1.00	22
23	LANDSCAPE OPEN SPACE	1.00	23
24	LANDSCAPE OPEN SPACE	1.00	24
25	LANDSCAPE OPEN SPACE	1.00	25
26	LANDSCAPE OPEN SPACE	1.00	26
27	LANDSCAPE OPEN SPACE	1.00	27
28	LANDSCAPE OPEN SPACE	1.00	28
29	LANDSCAPE OPEN SPACE	1.00	29
30	LANDSCAPE OPEN SPACE	1.00	30
31	LANDSCAPE OPEN SPACE	1.00	31
32	LANDSCAPE OPEN SPACE	1.00	32
33	LANDSCAPE OPEN SPACE	1.00	33
34	LANDSCAPE OPEN SPACE	1.00	34
35	LANDSCAPE OPEN SPACE	1.00	35
36	LANDSCAPE OPEN SPACE	1.00	36
37	LANDSCAPE OPEN SPACE	1.00	37
38	LANDSCAPE OPEN SPACE	1.00	38
39	LANDSCAPE OPEN SPACE	1.00	39
40	LANDSCAPE OPEN SPACE	1.00	40
41	LANDSCAPE OPEN SPACE	1.00	41
42	LANDSCAPE OPEN SPACE	1.00	42
43	LANDSCAPE OPEN SPACE	1.00	43
44	LANDSCAPE OPEN SPACE	1.00	44
45	LANDSCAPE OPEN SPACE	1.00	45
46	LANDSCAPE OPEN SPACE	1.00	46
47	LANDSCAPE OPEN SPACE	1.00	47
48	LANDSCAPE OPEN SPACE	1.00	48
49	LANDSCAPE OPEN SPACE	1.00	49
50	LANDSCAPE OPEN SPACE	1.00	50
51	LANDSCAPE OPEN SPACE	1.00	51
52	LANDSCAPE OPEN SPACE	1.00	52
53	LANDSCAPE OPEN SPACE	1.00	53
54	LANDSCAPE OPEN SPACE	1.00	54
55	LANDSCAPE OPEN SPACE	1.00	55
56	LANDSCAPE OPEN SPACE	1.00	56
57	LANDSCAPE OPEN SPACE	1.00	57
58	LANDSCAPE OPEN SPACE	1.00	58
59	LANDSCAPE OPEN SPACE	1.00	59
60	LANDSCAPE OPEN SPACE	1.00	60
61	LANDSCAPE OPEN SPACE	1.00	61
62	LANDSCAPE OPEN SPACE	1.00	62
63	LANDSCAPE OPEN SPACE	1.00	63
64	LANDSCAPE OPEN SPACE	1.00	64
65	LANDSCAPE OPEN SPACE	1.00	65
66	LANDSCAPE OPEN SPACE	1.00	66
67	LANDSCAPE OPEN SPACE	1.00	67
68	LANDSCAPE OPEN SPACE	1.00	68
69	LANDSCAPE OPEN SPACE	1.00	69
70	LANDSCAPE OPEN SPACE	1.00	70
71	LANDSCAPE OPEN SPACE	1.00	71
72	LANDSCAPE OPEN SPACE	1.00	72
73	LANDSCAPE OPEN SPACE	1.00	73
74	LANDSCAPE OPEN SPACE	1.00	74
75	LANDSCAPE OPEN SPACE	1.00	75
76	LANDSCAPE OPEN SPACE	1.00	76
77	LANDSCAPE OPEN SPACE	1.00	77
78	LANDSCAPE OPEN SPACE	1.00	78
79	LANDSCAPE OPEN SPACE	1.00	79
80	LANDSCAPE OPEN SPACE	1.00	80
81	LANDSCAPE OPEN SPACE	1.00	81
82	LANDSCAPE OPEN SPACE	1.00	82
83	LANDSCAPE OPEN SPACE	1.00	83
84	LANDSCAPE OPEN SPACE	1.00	84
85	LANDSCAPE OPEN SPACE	1.00	85
86	LANDSCAPE OPEN SPACE	1.00	86
87	LANDSCAPE OPEN SPACE	1.00	87
88	LANDSCAPE OPEN SPACE	1.00	88

